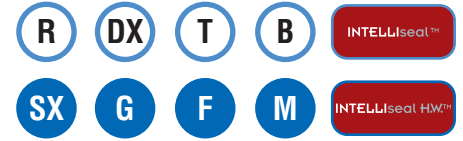


Caratteristiche - Specifications - Caractéristiques - Características

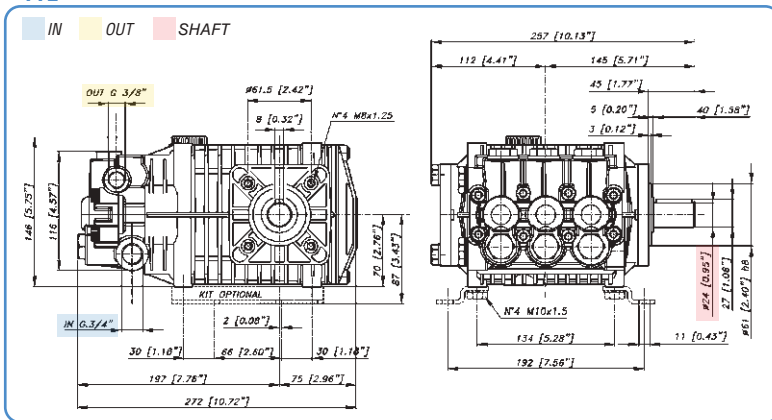
IN	Ø	3/4 BSP
	Press. Min.	-0,1 bar (-1.5 PSI)
	Press. Max.	6 bar (87 PSI)
	Temp. Max.	74°C (165°F)
OUT	Ø	3/8 BSP
SHAFT	Ø	24 mm
OIL	SAE 75W 90	1,3l (0.34 U.S.gal.)
WEIGHT	kg (lbs)	14,2 kg (31.2 lbs)



Carter simmetrico con doppio fissaggio per conversione rapida dell'uscita albero (destra o sinistra).
Symmetrical crankcase with double fixing for quick conversion of the shaft drive (right or left).

Codice Code	Modello Model	Press. Max Max Pressure		950 RPM				1450 RPM				1725 RPM				Pistone Plunger Ø mm	Corsa Stroke mm
		bar	PSI	l/min	GPM	kW	hp	l/min	GPM	kW	hp	l/min	GPM	kW	hp		
06.2059.97.GU	TTL 1320	210	3045	9	2,4	3,5	4,6	13	3,4	5,2	7,0	15	4,0	6,2	8,3	20	10
06.2060.97.GU	TTL 1520	210	3045	10	2,6	4,1	5,5	15	4,0	6,1	8,2	18	4,8	7,2	9,7	20	11,7
06.2061.97.GU	TTL 1820	210	3045	12	3,2	5,0	6,7	18	4,8	7,5	10,1	22	5,8	8,9	11,9	20	14,4
06.2062.97.GU	TTL 2120	210	3045	14	3,7	5,7	7,6	21	5,5	8,6	11,5	25	6,6	10,1	13,6	20	16,4
06.2063.97.GU	TTL 2420	210	3045	16	4,2	6,6	8,8	24	6,3	9,9	13,3	-	-	-	-	20	19

TTL



Guarnizioni - Seals
Joints - Juntas

Anteriori - Front Super "U"
Posteriori - Rear "U"

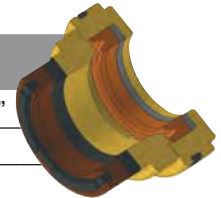
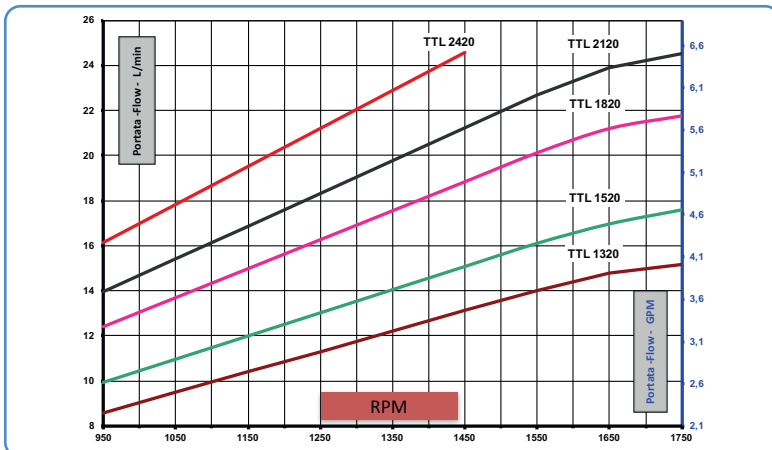


GRAFICO PRESTAZIONI - PERFORMANCE CHART

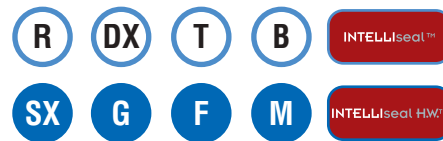


Accessori di completamento - Complementary accessories Accessoires complémentaires - Accesorios complementarios



Caratteristiche - Specifications - Caractéristiques - Características

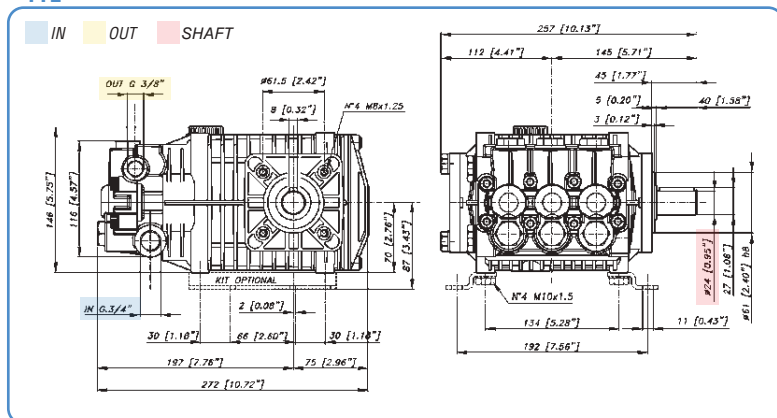
IN	Ø	3/4 BSP
	Press. Min.	-0,1 bar (-1.5 PSI)
	Press. Max.	6 bar (87 PSI)
	Temp. Max.	74°C (165°F)
OUT	Ø	3/8 BSP
SHAFT	Ø	24 mm
OIL	SAE 75W 90	1,3l (0.34 U.S.gal.)
WEIGHT	kg (lbs)	14,2 kg (31.2 lbs)



Carter simmetrico con doppio fissaggio per conversione rapida dell'uscita albero (destra o sinistra).
Symmetrical crankcase with double fixing for quick conversion of the shaft drive (right or left).

Codice Code	Modello Model	Press. Max Max Pressure		950 RPM				1450 RPM				1725 RPM				Pistone Plunger Ø mm	Corsa Stroke mm
		bar	PSI	l/min	GPM	kW	hp	l/min	GPM	kW	hp	l/min	GPM	kW	hp		
06.2041.97.GU	TTL 1330	300	4350	9	2,4	5,0	6,7	13	3,4	7,6	10,2	15	4,0	8,9	12,0	18	10
06.2042.97.GU	TTL 1530	300	4350	10	2,6	5,8	7,7	15	4,0	8,7	11,7	18	4,8	10,3	13,8	18	14,4
06.2043.97.GU	TTL 1730	300	4350	11	2,9	6,6	8,8	17	4,5	9,9	13,3	20	5,3	11,7	15,7	18	16,4
06.2044.97.GU	TTL 2030	300	4350	13	3,4	7,6	10,2	20	5,3	11,5	15,4	23	6,1	13,6	18,2	18	19

TTL



Guarnizioni - Seals
Joints - Juntas

Anteriori - Front Super "U"
Posteriori - Rear "U"

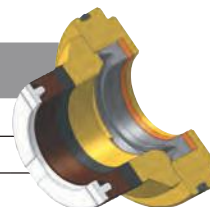
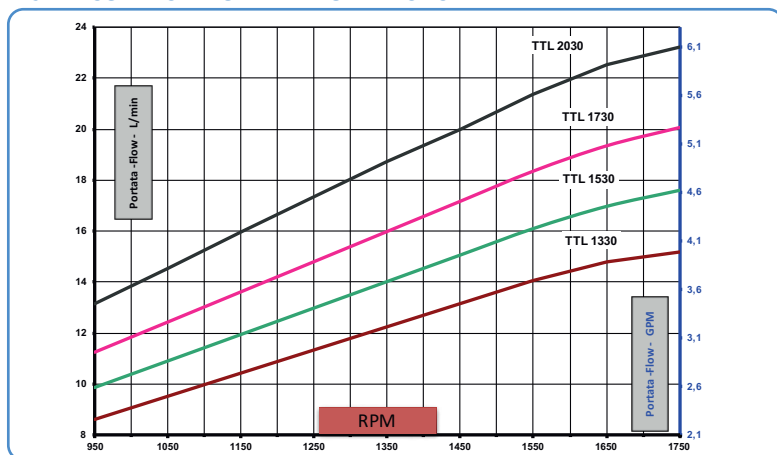


GRAFICO PRESTAZIONI - PERFORMANCE CHART



Accessori di completamento - Complementary accessories
Accessoires complémentaires - Accesorios complementarios

