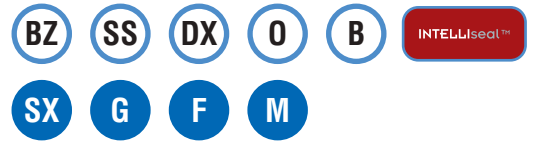


Caratteristiche - Specifications - Caractéristiques - Características

IN	Ø	1" BSP
	Press. Min.	-0,1 bar (-1.5 PSI)
	Press. Max.	6 bar (87 PSI)
	Temp. Max.	74°C (165°F)
OUT	Ø	3/8 BSP
SHAFT	Ø	30 mm
OIL	SAE 75W 90	1,5l (0.4 U.S.gal.)
WEIGHT	kg (lbs)	20,8 kg (46 lbs)

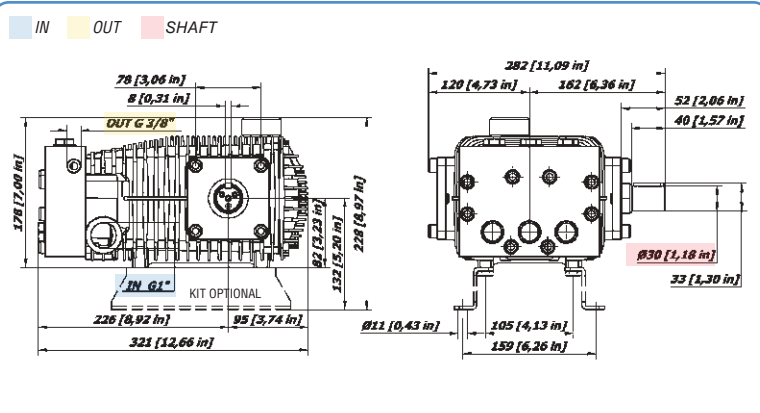


TESTATA IN ACCIAIO INOX
HEAD IN STAINLESS STEEL



Codice Code	Modello Model	Press. Max Max Pressure		950 RPM				1200 RPM				1450 RPM				Pistone Plunger Ø mm	Corsa Stroke mm
		bar	PSI	l/min	GPM	kW	hp	l/min	GPM	kW	hp	l/min	GPM	kW	hp		
08.1070.97.A	RA 1650-P	500	7250	11	2,9	10,2	13,7	13	3,4	12,8	17,1	16	4,2	15,4	20,7	20	12,5
08.1071.97.A	RA 1850-P	500	7250	12	3,2	11,4	15,3	15	4,0	14,3	19,2	18	4,8	17,3	23,1	20	14
08.1072.97.A	RA 2150-P	500	7250	14	3,7	13,9	18,6	18	4,8	17,3	23,3	21	5,5	21,0	28,1	20	17
08.1074.97.A	RA 2450-P	500	7250	16	4,2	15,5	20,8	20	5,3	19,4	26,0	24	6,3	23,4	31,4	20	19,5

RA Premium



Guarnizioni - Seals
Joints - Juntas

Anteriori - Front Super "U"
Posteriori - Rear "U"

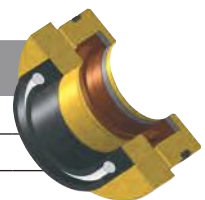
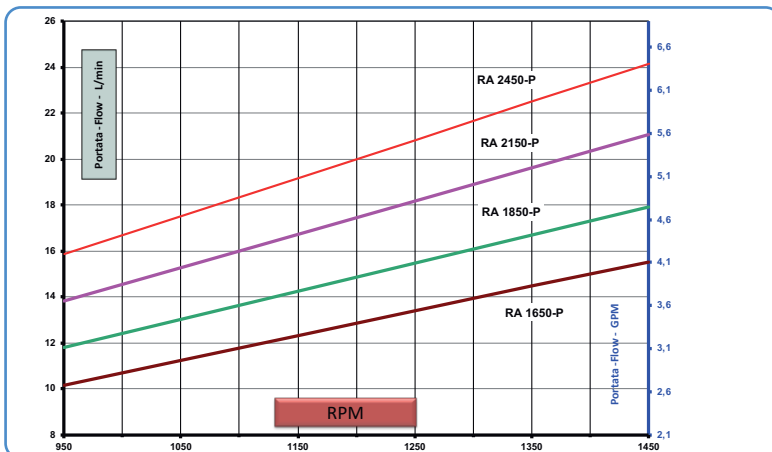


GRAFICO PRESTAZIONI - PERFORMANCE CHART



Accessori di completamento - Complementary accessories
Accessoires complémentaires - Accesorios complementarios

