



YKF 200 POMPA INTERNAL ECCENTRIC GEAR PUMP



POMPA DEĞERLERİ / PUMP PROPERTIES

| | |
|-------|------------------------|
| Q | : 15 m ³ /h |
| Hm | :1 ~ 14 Bar |
| T | :0 ~ 200 °C |
| n | :900 d/d |
| Visc. | :100 ~ 250.000 SSU |

KULLANIM ALANLARI

- Fuel Oil Servis Tankları, Gaz Yağı, Mazot Tankerlerinde
- Reçine ve Polimerler
- Asfalt ve Bitüm
- Kağıt ve Boya Sanayinde
- Küçük çapta kızgın yağ sirkülasyonlarında
- İlaç, kimya ve deterjan sanayinde
- Gıda Sanayinde.

USE AREAS

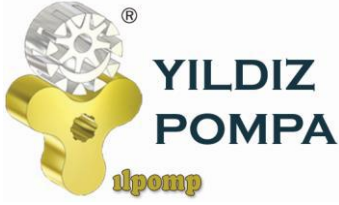
- Fuel Oil Service Tanks, Gasoil, Diesel Tankers
- Resin and Polymer
- Asphalt and Bitumen
- Paper and Paint/dye industry
- Circulation of Hot Oil (limited)
- Medicine, Chemical and Detergent Industry
- Food Industry.

MALZEME SEÇENEKLERİ

- Pompa Gövdesi, Kapaklar : Dökme (pik) demir, Sfero döküm, Çelik döküm, Paslanmaz AISI 304- AISI 316 döküm
- Dişliler : Sfero döküm, Çelik döküm, Paslanmaz AISI 304- AISI 316 döküm
- Yataklar : Snbz 12 bronz, karbon grafit, Silisyum Karbür, Sert Metal Kaplama, rulman
- Sızdırmazlık: Yumuşak Salmastra, Rotatherm Salmastra, Mekanik salmastra. Keçeli Sistem, Kartex Mekanik Salmastra

MATERIAL OPTIONS

- Pump Body, covers : Pig Cast Iron, Spheroidal Cast Iron, Cast Steel, AISI 304/316 CrNi Stainless Steel
- Gears : Spheroidal Cast iron, Cast Steel, AISI 304/316 CrNi Stainless Steel
- Bearings: Snbz 12 bronze, carbon graphite, silicon carbide, hard metal coated steel, bearing
- Sealing: Soft Seal or Packing Gland, Rotatherm Seal, Lip Seal, Mechanical Seal, Cartridge Type Mechanical Seal



YKF 200 POMPA INTERNAL ECCENTRIC GEAR PUMP



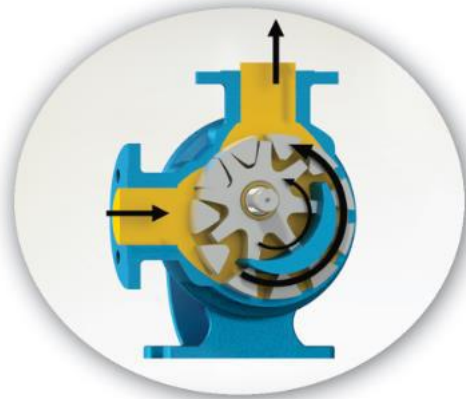
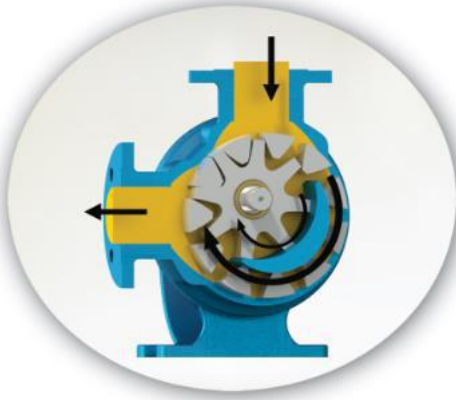
İÇTEN EKSANTİK DİŞLİ POMPA ÇALIŞMA PRENSİBİ / WORKING PRINCIPLE OF INTERNAL ECCENTRIC GEAR PUMP

Yıldız Pompa' nın "dişli içinde dişli" prensibinde sadece iki tane hareketli parça vardır. Bütün pozitif deplasmanlı YILDIZ dişli pompalarının güvenilir ve verimli çalışmasının sırrı budur. Sıvının pozitif deplasmanı (yer değiştirmesi) rotor ve avare dişlisinin dişleri arasındaki boşluğun komple dolmasıyla sağlanmaktadır. Bütün dişli pompalarda olduğu gibi, YILDIZ POMPA' da da performansın en üst noktaya çıkmasını sınırlayıcı yegane faktör, pompalanan sıvının diğerlerine göre daha temiz olmasını istemesidir.

Pompa milinin her devrinde emiş ağızı yoluyla belli bir miktar sıvı pompaya girer. Bu sıvı rotor ile avare dişlisi arasındaki boşluğu doldurur. Pompa kapağında bulunan hilal, çıkış ağızına doğru pürüzsüz şekilde hareket eden sıvının akışını ayırır. Kendi dişleri ile hilalin iç yüzeyi arasında sıvı taşıyan avare dişlisi pompa kapağının desteklediği bir mil üzerinde döner. Dişleri arasında sıvı taşıyan rotor dişlisi pompa gövdesi ile hilalin dış yüzeyi arasında hareket eder ve pompa miline bağlıdır.

YILDIZ's simple "gear-within a gear" principle has only two moving parts. It is the secret of dependable, efficient operation of all positive displacement YILDIZ POMPA's PUMPS. The positive displacement of liquid is accomplished by the complete filling of the spaces between the teeth of the rotor and idler gears. The only limiting factor to peak performance in YILDIZ POMPA, as with all rotary pumps, is that the liquid pumped must be comparatively clean.

With every revolution of the pump's shaft, a definite amount of liquid enters the pump through the suction port. This liquid fills the spaces between the teeth of the rotor and the idler. The crescent on the pump head splits the flow of liquid as it moves smoothly towards the discharge port. The idler gear, which carries the liquid between its teeth and the inside surface of the crescent is connected to pump cover. On the otherhand, rotor gear which is rotated directly with pump shaft delivers the liquid between gear teeth and crescent's souter surface.



YKF 200 POMPA INTERNAL ECCENTRIC GEAR PUMP



Yandaki renkli kısım sıvının pompa gövdesindeki emiş ağızı alanına, rotor dişlisi ve avare dişlisi dişleri arasındaki dişli boşlukları alanına girişini gösterir. İki siyah ok pompanın dönüş ve sıvının ilerleyişini gösterir.

The yellow colored portion at side indicates the liquid as it enters the suction port area of the casing and the area between the rotor teeth and corresponding concave area between the idler teeth. The two black arrows indicate the pump rotation and progress of the liquid.



"Dişli içinde dişli" prensibinde çalışan dişliler ile pompa içinde sıvının ilerleyişine dikkat edin. Aynı zamanda, pompa kapağı üzerindeki hilal şeklinin sıvıyı nasıl böldüğüne ve emiş ile boşaltma ağızları arasında bir keçe (conta) gibi vazife gördüğüne dikkat ediniz.

Notice the progress of the liquid through the pump and between the teeth of rotor idler gear. Also, note how the crescent shape on the head divides the liquid and acts as a seal between the suction and discharge ports.



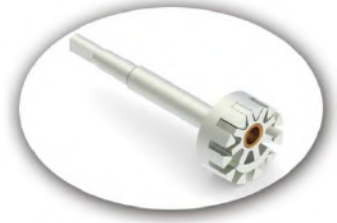
Bu resim pompanın iç kısmının dolup sıvının boşaltma ağızı alanına itilmesinden hemen önceki durumunu göstermektedir. Avare ve rotor dişlilerinin dizaynının sıvı için nasıl bir kapalı cep oluşturduğuna ve bunun tam bir hacim kontrolü sağlanmasını nasıl garantilediğine dikkat ediniz.

This illustration shows the pump in a nearly flooded condition just previous to the liquid being forced into the discharge port area. Notice how the gear design of the idler and rotor form locked pockets for the liquid to guarantee absolute volume control.



Bu görüntü pompanın tamamen dolup taşıdığı durumu ve sıvının boşaltma işlemini, boşaltma ağızından ilerleyişini göstermektedir. Emiş ve boşaltma ağızlarına eşit mesafede sızdırmaz bir keçe oluşturan, sıvıyı boşaltma ağızından dışarı doğru iten, rotor ve avare dişlisinin dişleri birbiri içine geçer.

The view shows the pump in a completely flooded condition and in the process of discharging the liquid through discharge port. The rotor and idler teeth mesh, forming a seal equidistant between the both ports, forcing liquid out the discharge port.



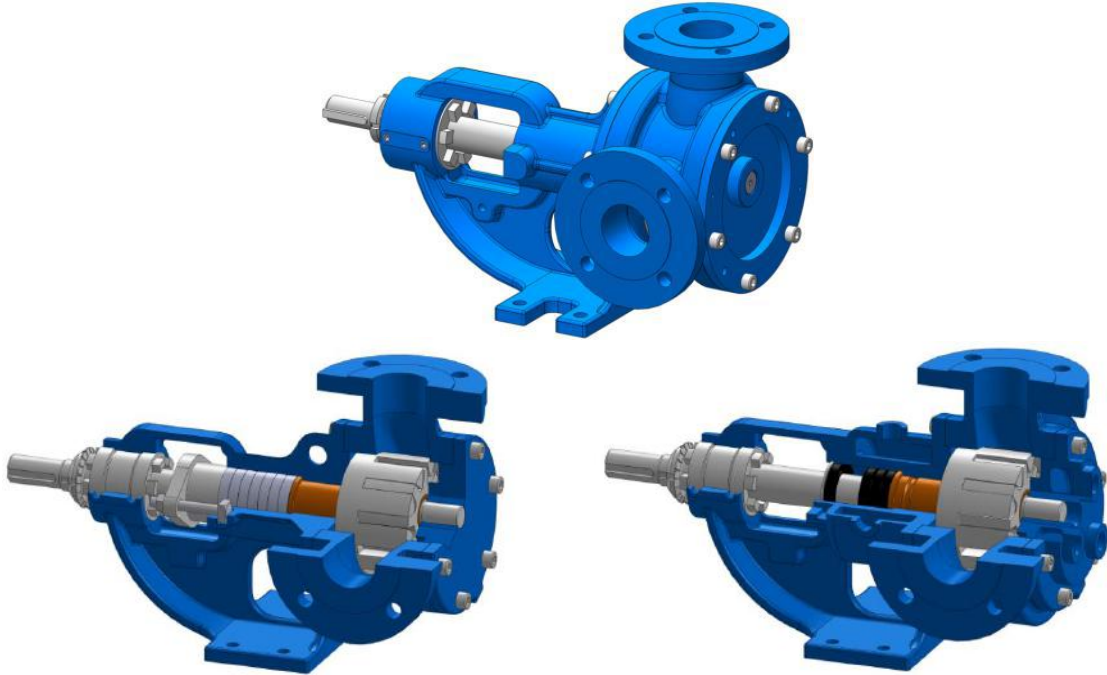
YK-200 - YKF-200 - YKYF-200 POMPASINA AİT KAPASİTE VE GÜÇ TABLOSU /
CAPACITY AND POWER TABLE

| KAPASİTE (m ³ /h) CAPACITY (Q) | DEVİR (d/d) SPEED (rpm) | ÇIKIŞ BASINCI / PRESSURE | | | | VİSKOZİTE VISCOSITY |
|--|----------------------------|--------------------------|---------|---------|--------|------------------------|
| | | 3 Bar | 6 Bar | 9 Bar | 12 Bar | |
| 0,6 | 40 | 0,55 HP | 0,75 HP | 0,75 HP | 1 HP | 75000 SSU |
| 0,8 | 60 | 0,55 HP | 0,75 HP | 1 HP | 1 HP | 25000 SSU |
| 1,5 | 100 | 1 HP | 1,5 HP | 1,5 HP | 2 HP | 25000 SSU |
| 3,7 | 250 | 1,5 HP | 2 HP | 3 HP | 4 HP | 7500 SSU |
| 5 | 350 | 2 HP | 3 HP | 4 HP | 5,5 HP | 2500 SSU |
| 5,5 | 450 | 2 HP | 3 HP | 4 HP | 5,5 HP | 750 SSU |
| 13 | 900 | 4 HP | 5,5 HP | 10 HP | 10 HP | 750 SSU |
| 21 | 1400 | 5,5 HP | 10 HP | 15 HP | 15 HP | 100 SSU |

| MOTOR GÜÇLERİ MOTOR POWERS | |
|-------------------------------|----------------|
| 5,5 HP | 1400 d/d (rpm) |
| MOTOR GÖVDESİ MOTOR BODY | |
| 112 | |

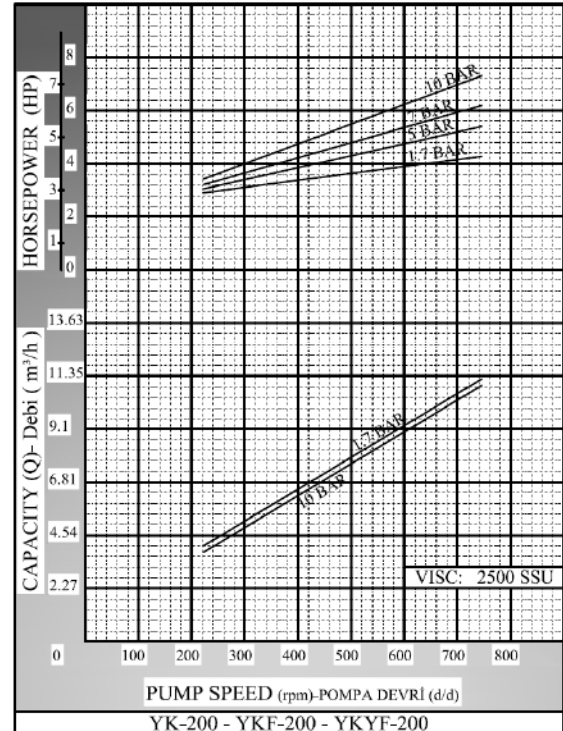
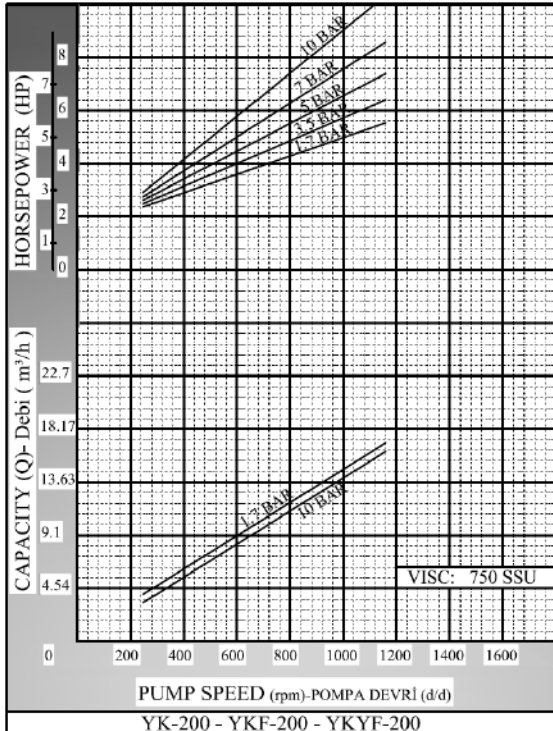
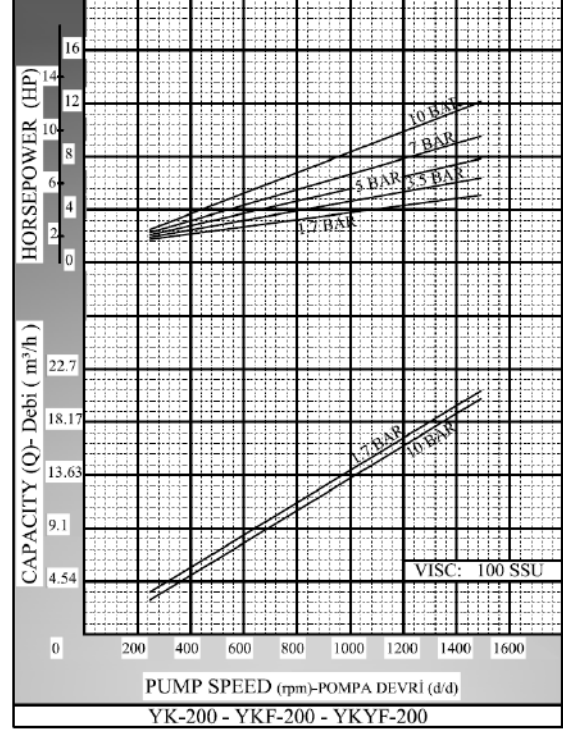
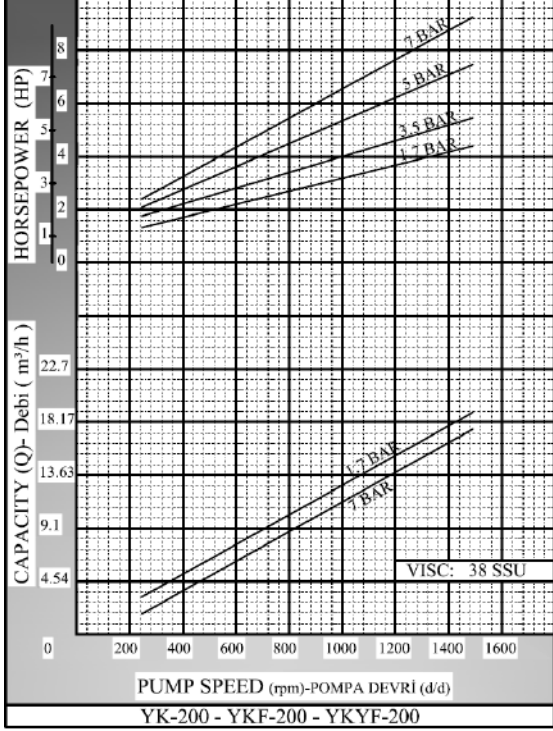
| MOTOR GÜÇLERİ MOTOR POWERS | |
|-------------------------------|----------------|
| 4 HP | 900 d/d (rpm) |
| 5,5 HP | 900 d/d (rpm) |
| 10 HP | 1400 d/d (rpm) |
| 15 HP | 1400 d/d (rpm) |
| MOTOR GÖVDESİ MOTOR BODY | |
| 132 | |

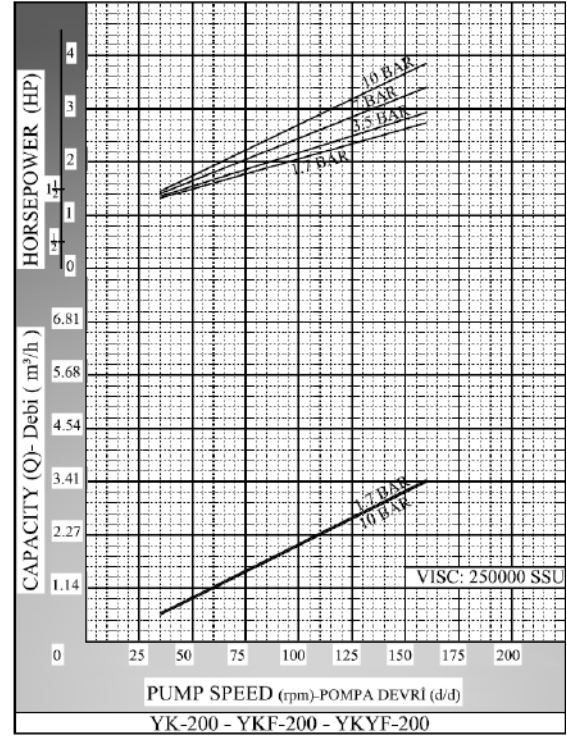
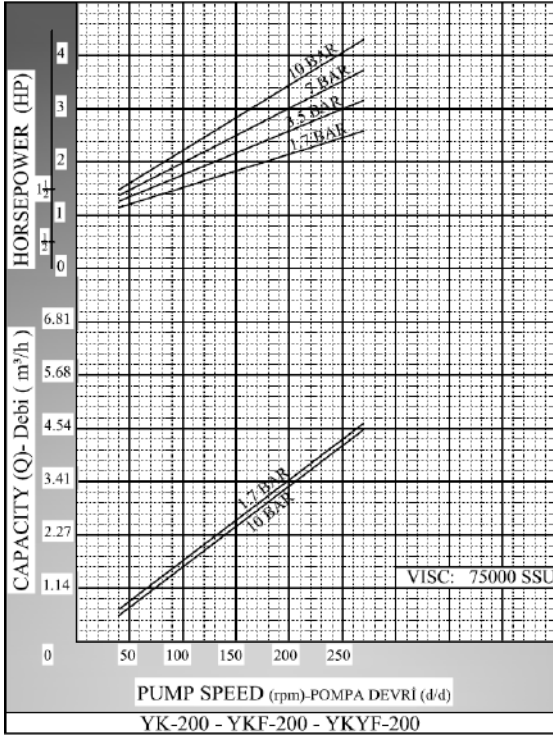
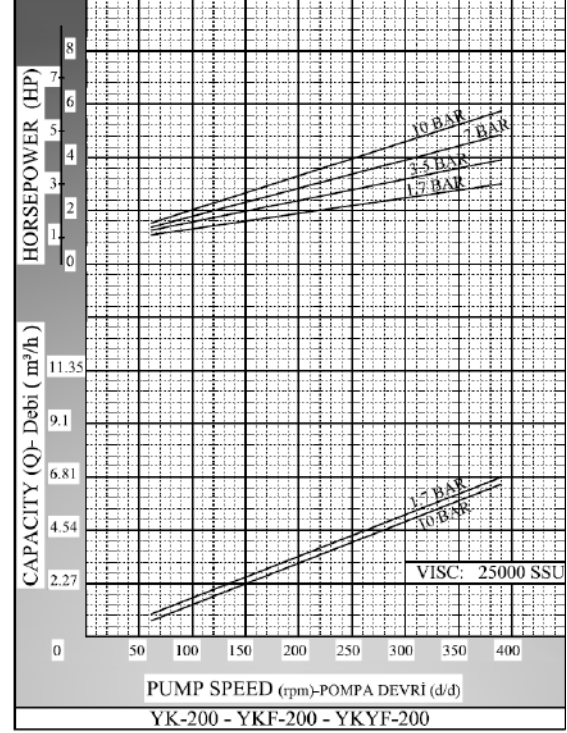
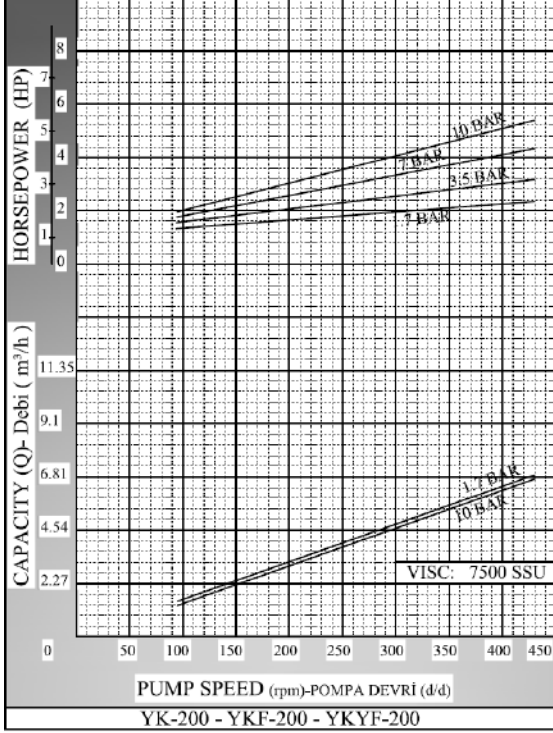
| MOTOR GÜÇLERİ MOTOR POWERS | |
|-------------------------------|---------------|
| 10 HP | 900 d/d (rpm) |
| MOTOR GÖVDESİ MOTOR BODY | |
| 160 | |

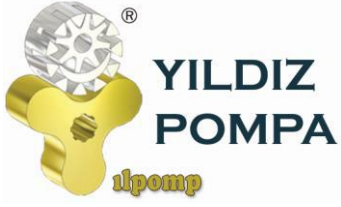




KAPASİTE EĞRİLERİ / CAPACITY GRAPHS



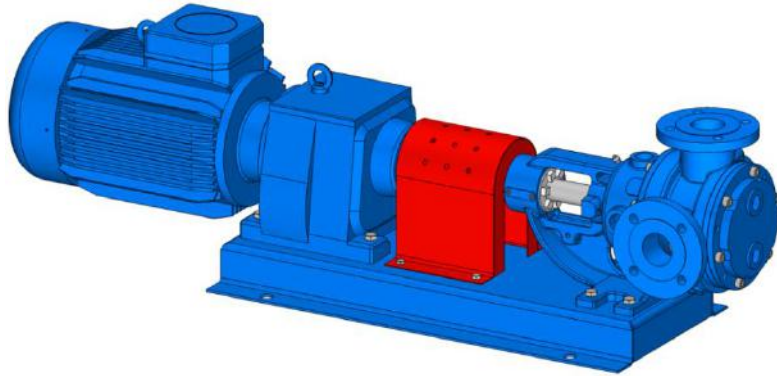
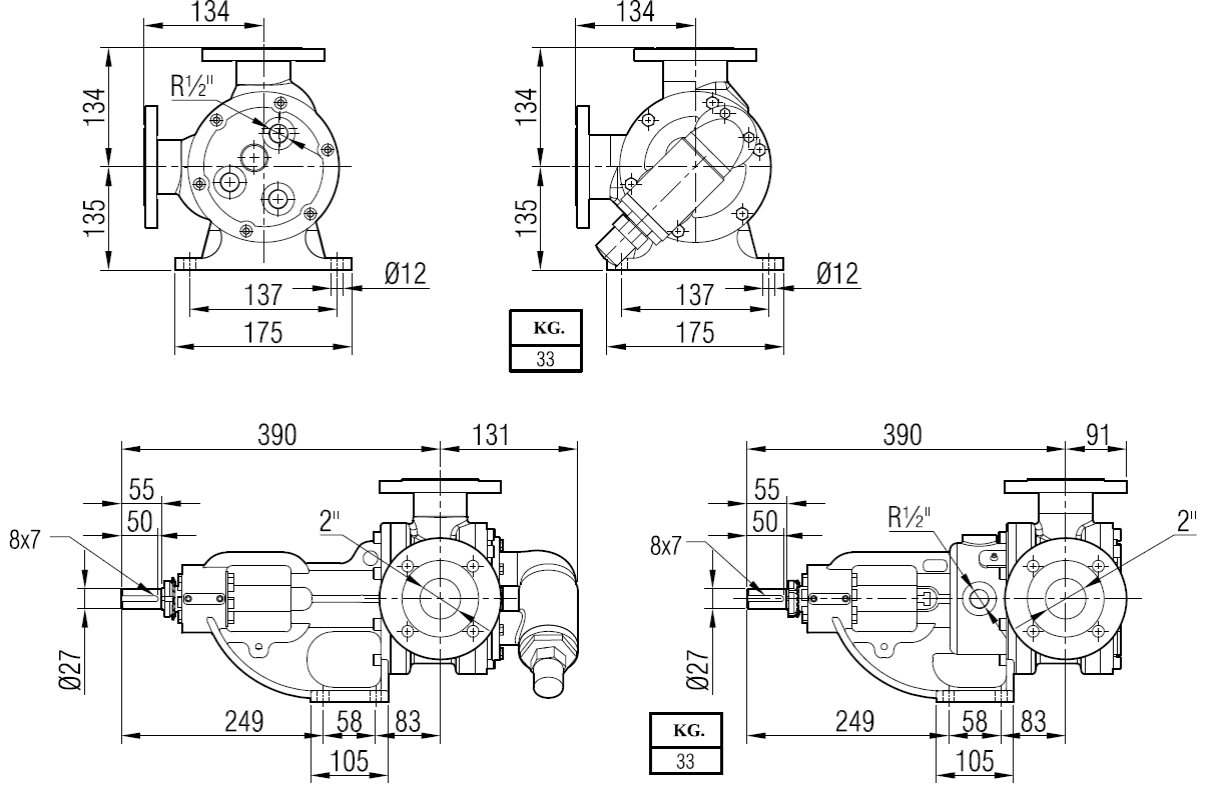


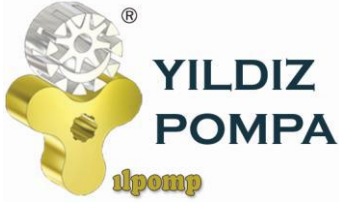


YKF 200 POMPA INTERNAL ECCENTRIC GEAR PUMP



POMPA BOYUT ÖLÇÜLERİ / PUMP DIMENSIONS

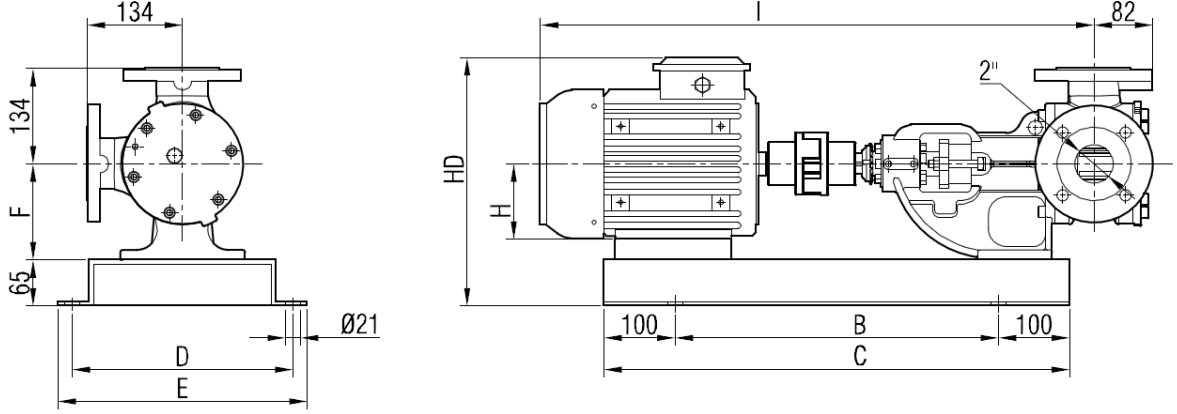




YKF 200 POMPA INTERNAL ECCENTRIC GEAR PUMP

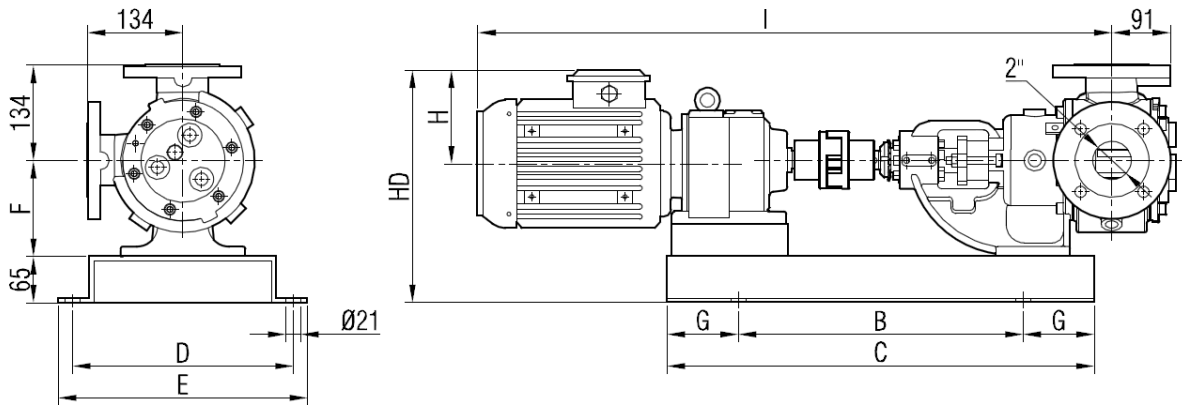


AKUPLAJ ÖLÇÜLERİ / COUPLING DIMENSIONS MOTOR AKUPELİ / MOTOR DRIVE



| MOTOR GÜÇ VE DEVİRLERİ / MOTOR POWER AND SPEED | | | I | HD | H | B | C | D | E | F | kg. |
|---|---------------|------------|-----|-----|-----|-----|-----|-----|-----|-----|-----|
| 2 hp / 1,5 kw | 750 d/d (rpm) | MOTOR 112M | 804 | 344 | 112 | 500 | 700 | 310 | 350 | 135 | 83 |
| 3 hp / 2,2 kw | 900 d/d (rpm) | MOTOR 132S | 865 | 367 | 132 | 580 | 780 | 380 | 420 | | 83 |
| 3 hp / 2,2 kw | 750 d/d (rpm) | | | | | | | | | | 92 |
| 4 hp / 3 kw | 900 d/d (rpm) | MOTOR 132M | 903 | 367 | 132 | 580 | 780 | 380 | 420 | | 93 |
| 4 hp / 3 kw | 750 d/d (rpm) | | | | | | | | | | 100 |
| 5,5 hp / 4 kw | 900 d/d (rpm) | | | | | | | | | 104 | |

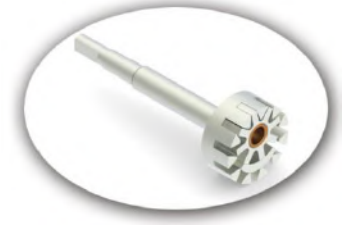
AKUPLAJ ÖLÇÜLERİ / COUPLING DIMENSIONS REDÜKTÖR AKUPELİ / GEARBOX DRIVE



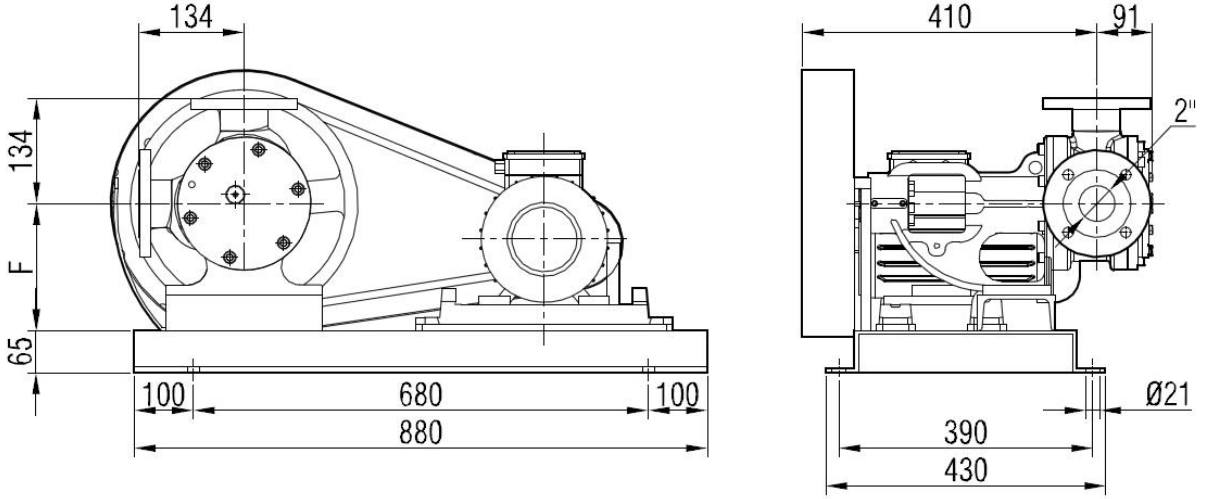
| MOTOR GÜÇ VE DEVİRLERİ / MOTOR POWER AND SPEED | | | I | HD | H | B | C | D | E | F | G | kg. | |
|---|---------------------------|-------------|------|-----|-----|-----|-----|-----|-----|-----|-----|-----|-----|
| 1 hp / 0,75 kw | 90/400 d/d (rpm) | İRAM42/80 | 821 | 314 | 118 | 430 | 550 | 260 | 300 | 135 | 60 | 64 | |
| 2 hp / 1,5 kw | 105/450 d/d (rpm) | İRAM52/90L | 901 | 327 | 132 | 420 | 620 | 310 | 350 | | 100 | 83 | |
| 4 hp / 3 kw | 280/600 d/d (rpm) | İRAM52/100L | 930 | 336 | 141 | | | | | | | 500 | 700 |
| 3 hp/2,2 kw - 4 hp/3kw | 50/234 - 65/570 d/d (rpm) | İRAM62/100L | 994 | 330 | 141 | 500 | 700 | 310 | 350 | | 100 | | |
| 5,5 hp / 4 kw | 87/570 d/d (rpm) | İRAM62/112M | 1015 | 338 | 149 | | | | | | | | |



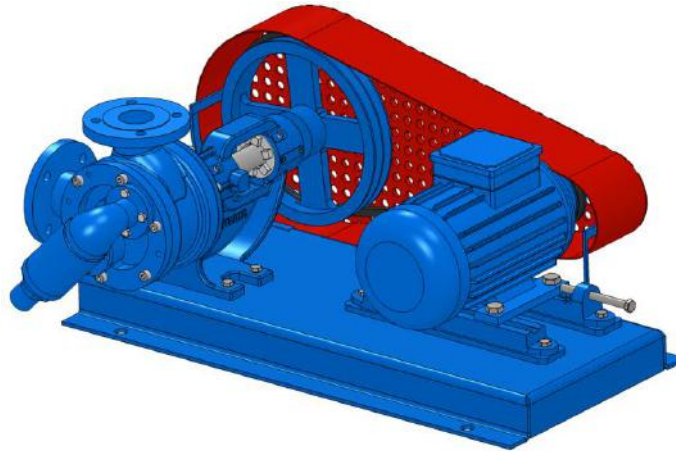
**YKF 200 POMPA
INTERNAL ECCENTRIC
GEAR PUMP**



**KAYIŞ KASNAK AKUPLELİ POMPA ÖLÇÜLERİ /
BELT PULLEY COUPLING PUMP DIMENSIONS**



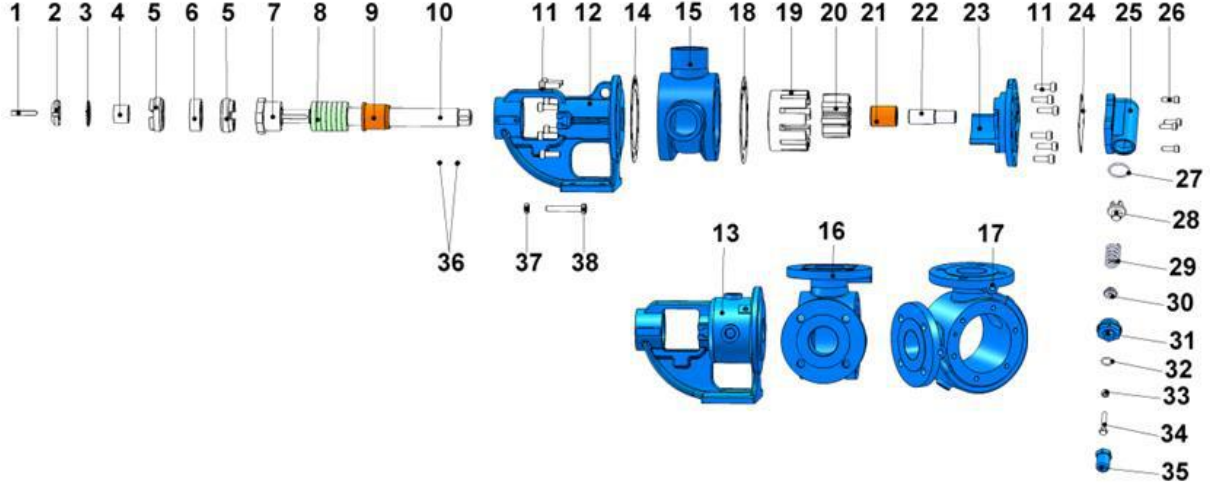
| MOTOR GÜÇ VE DEVİRLERİ / MOTOR POWER AND SPEED | | Pompa Devirleri / Pump speeds | | | | F(1) | F(2) | F(3) | F(4) | kg. |
|---|------------|----------------------------------|-----------|-----------|-----------|------|------|------|------|-----|
| | | n1 d/d | n2 d/d | n3 d/d | n4 d/d | | | | | |
| 3 hp / 2,2 kw | MOTOR 100L | 450 | 400 | 350 | 310 | 135 | 190 | 190 | 245 | 120 |
| 4 hp / 3 kw | MOTOR 100L | | | | | | | | | 130 |
| 5,5 hp / 4 kw | MOTOR 112M | | | | | | | | | 135 |
| 7,5 hp / 5,5 kw | MOTOR 132S | | | | | | | | | 145 |
| 10 hp / 7,5 kw | MOTOR 132M | | | | | | | | | 155 |





YEDEK PARÇA LİSTESİ / SPARE PARTS LIST

**YUMUŞAK SALMASTRALI VE BYPASSLI / SEALED WITH SOFT SEAL AND PRESSURE RELIEF
VALVE ON COVER**

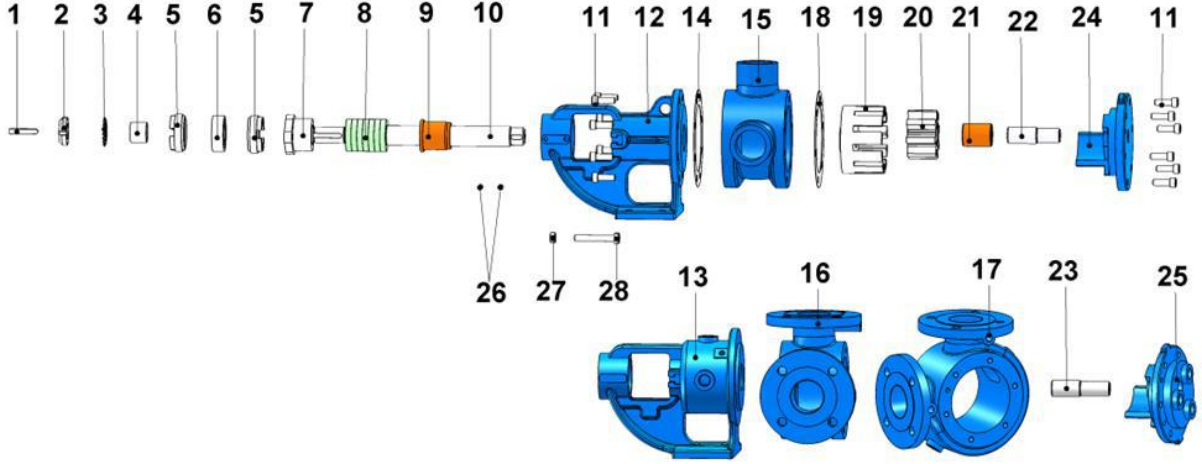


| No | PARÇA İSMİ | PART NAME | ADET/ QTY. | No | PARÇA İSMİ | PART NAME | ADET/ QTY. |
|----|---------------------------------|---|---------------|----|--|--------------------------|---------------|
| 1 | KAMA 8x7x50 AB | COUPLING KEY 8x7x50 AB | 1 | 20 | AVARA DIŞLİ | IDLER GEAR GEAR | 1 |
| 2 | KİLİT SOMUNU | LOCK NUT | 1 | 21 | AVARA DIŞLİ BURCU | IDLER BUSHING | 1 |
| 3 | KİLİT SACI | LOCK WASHER | 1 | 22 | KAPAK MİLİ | BYPASSED COVER PIN | 1 |
| 4 | BİLEZİK | SPACER | 1 | 23 | KAPAK (BYPASSLI) | COVER (w/ BYPASS INLETS) | 1 |
| 5 | AYAR SOMUNU | ADJUSTING NUT | 2 | 24 | BYPASS CONTASI | BYPASS GASKET | 1 |
| 6 | RULMAN (2206-2RS) | BALL BEARING (2206-2RS) | 1 | 25 | BYPASS | PRESSURE RELIEF VALVE | 1 |
| 7 | SALMASTRA BASKISI | PACKING PRESS | 1 | 26 | IMBUS CİVATA M8x25 | INBUS BOLT M8x25 | 4 |
| 8 | YUMUŞAK SALMASTRA | SOFT SEAL / PACKING GLAND | 1 TK. | 27 | BYPASS O-RING | BYPASS O-RING | 1 |
| 9 | KONSOL BURCU | BRACKET BUSHING | 1 | 28 | KLEPE | VALVE | 1 |
| 10 | MİL | SHAFT | 1 | 29 | YAY | SPRING | 1 |
| 11 | IMBUS CİVATA M10x30 | INBUS BOLT M10x30 | 14 | 30 | PUL | WASHER | 1 |
| 12 | KONSOL | BRACKET | 1 | 31 | BYPASS KAPAĞI | BYPASS COVER | 1 |
| 13 | KONSOL (CEKETLİ) | BRACKET (w/HEATING JACKET) | 1 | 32 | TİJ KAPAK O-RİNG | CAP O-RING | 1 |
| 14 | KONSOL CONTASI | BRACKET GASKET | 1 | 33 | M8 SOMUN | NUT M8 | 1 |
| 15 | ARA GÖVDE (BORU DIŞLİ 90°) | CASING (90° THREADED PORTS) | 1 | 34 | 6 KÖŞE CİVATA M8x45 | ADJUSTING SCREW M8x45 | 1 |
| 16 | ARA GÖVDE (FLANŞLI 90°) | CASING (90° FLANGED PORTS) | 1 | 35 | TİJ KAPAĞI | CAP | 1 |
| 17 | ARA GÖVDE (FLANŞLI CEKETLİ 90°) | CASING (90° FLANGED PORTS & w/HEATING JACKET) | 1 | 36 | SETUSKUR M8x16 | GRUB SCREW M8x16 | 4 |
| 18 | KAPAK CONTASI | COVER GASKET | 1 | 37 | M10 SOMUN | NUT M10 | 2 |
| 19 | ÇEVRE DIŞLİ | ROTOR GEAR | 1 | 38 | 4 KÖŞE SALMASTRA BASKI CİVATASI M10x70 | SQUARE SCREW M10x70 | 2 |

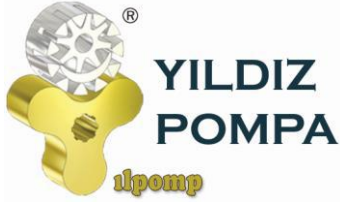


YEDEK PARÇA LİSTESİ / SPARE PARTS LIST

**YUMUŞAK SALMASTRALI, CEKETLİ VE KÖR KAPAKLI / SEALED WITH SOFT SEAL, JACKETED,
AND WITH BLIND COVER**



| No | PARÇA İSMİ | PART NAME | ADET/ QTY. | No | PARÇA İSMİ | PART NAME | ADET/ QTY. |
|----|---------------------|----------------------------|---------------|----|--|---|---------------|
| 1 | KAMA 8x7x50 AB | COUPLING KEY 8x7x50 AB | 1 | 15 | ARA GÖVDE (BORU DİŞLİ 90°) | CASING (90° THREADED PORTS) | 1 |
| 2 | KİLİT SOMUNU | LOCK NUT | 1 | 16 | ARA GÖVDE (FLANŞLI 90°) | CASING (90° FLANGED PORTS) | 1 |
| 3 | KİLİT SACI | LOCK WASHER | 1 | 17 | ARA GÖVDE (FLANŞLI CEKETLİ 90°) | CASING (90° FLANGED PORTS & w/HEATING JACKET) | 1 |
| 4 | BİLEZİK | SPACER | 1 | 18 | KAPAK CONTASI | COVER GASKET | 1 |
| 5 | AYAR SOMUNU | ADJUSTING NUT | 2 | 19 | ÇEVRE DİŞLİ | ROTOR GEAR | 1 |
| 6 | RULMAN (2206-2RS) | BALL BEARING (2206-2RS) | 1 | 20 | AVARA DİŞLİ | IDLER GEAR GEAR | 1 |
| 7 | SALMASTRA BASKISI | PACKING PRESS | 1 | 21 | AVARA DİŞLİ BURCU | IDLER BUSHING | 1 |
| 8 | YUMUŞAK SALMASTRA | SOFT SEAL / PACKING GLAND | 1 TK. | 22 | KAPAK MİLİ | BYPASSED COVER PIN | 1 |
| 9 | KONSOL BURCU | BRACKET BUSHING | 1 | 23 | CEKETLİ KAPAK MİLİ | JACKETD COVER PIN | 1 |
| 10 | MİL | SHAFT | 1 | 24 | KAPAK (KÖR) | BLIND COVER | 1 |
| 11 | IMBUS CİVATA M10x30 | INBUS BOLT M10x30 | 14 | 25 | KAPAK (CEKETLİ) | COVER (w/ HEATING JACKET) | 1 |
| 12 | KONSOL | BRACKET | 1 | 26 | SETUSKUR M10x16 | GRUB SCREW M10x16 | 4 |
| 13 | KONSOL (CEKETLİ) | BRACKET (w/HEATING JACKET) | 1 | 27 | M10 SOMUN | NUT M10 | 2 |
| 14 | KONSOL CONTASI | BRACKET GASKET | 1 | 28 | 4 KÖŞE SALMASTRA BASKI CİVATASI M10x70 | SQUARE SCREW M10x70 | 2 |

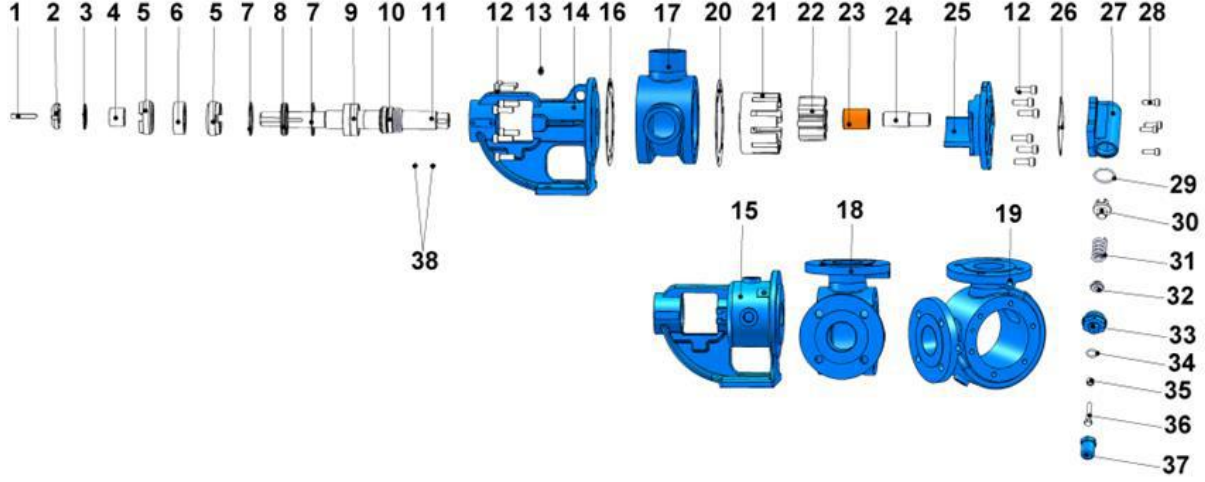


YKF 200 POMPA INTERNAL ECCENTRIC GEAR PUMP



YEDEK PARÇA LİSTESİ / SPARE PARTS LIST

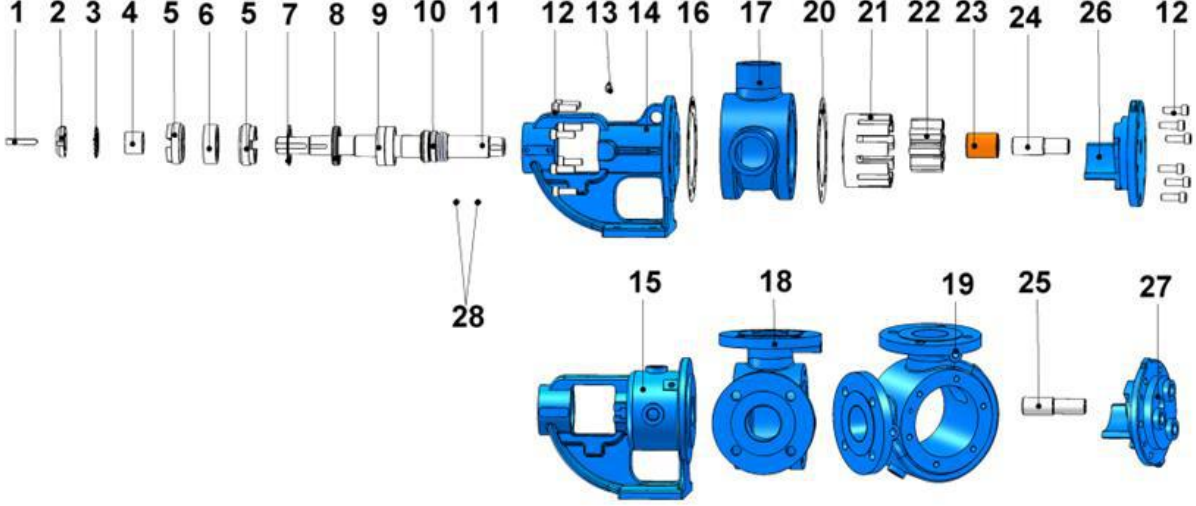
MEKANİK SALMASTRALI VE BYPASSLI / SEALED WITH MECHANICAL SEAL, AND PRESSURE RELIEF VALVE ON COVER



| No | PARÇA İSMİ | PART NAME | ADET/ QTY. | No | PARÇA İSMİ | PART NAME | ADET/ QTY. |
|----|---------------------------------|---|---------------|----|---------------------|--------------------------|---------------|
| 1 | KAMA 8x7x50 AB | COUPLING KEY 8x7x50 AB | 1 | 20 | KAPAK CONTASI | COVER GASKET | 1 |
| 2 | KİLİT SOMUNU | LOCK NUT | 1 | 21 | ÇEVRE DİŞLİ | ROTOR GEAR | 1 |
| 3 | KİLİT SACI | LOCK WASHER | 1 | 22 | AVARA DİŞLİ | IDLER GEAR GEAR | 1 |
| 4 | BİLEZİK | SPACER | 1 | 23 | AVARA DİŞLİ BURCU | IDLER BUSHING | 1 |
| 5 | AYAR SOMUNU | ADJUSTING NUT | 2 | 24 | KAPAK MİLİ | BYPASSED COVER PIN | 1 |
| 6 | RULMAN (2206-2RS) | BALL BEARING (2206-2RS) | 1 | 25 | KAPAK (BYPASSLI) | COVER (w/ BYPASS INLETS) | 1 |
| 7 | İÇ SEGMAN (ø62) | INTERNAL CIRCLIP (ø62) | 2 | 26 | BYPASS CONTASI | BYPASS GASKET | 1 |
| 8 | KEÇE ø35xø62x10 | LIP SEAL ø35xø62x10 | 1 | 27 | BYPASS | PRESSURE RELIEF VALVE | 1 |
| 9 | RULMAN (6007) | BALL BEARING (6007) | 2 | 28 | İMBUS CİVATA M8x25 | INBUS BOLT M8x25 | 4 |
| 10 | MEKANİK SALMASTRA ø35 | MECHANICAL SEAL ø35 | 1 | 29 | BYPASS O-RING | BYPASS O-RING | 1 |
| 11 | MİL | SHAFT | 1 | 30 | KLEPE | VALVE | 1 |
| 12 | İMBUS CİVATA M10x30 | INBUS BOLT M10x30 | 14 | 31 | YAY | SPRING | 1 |
| 13 | GRESÖR R3/8" | GREASING FITTING R3/8" | 1 | 32 | PUL | WASHER | 1 |
| 14 | KONSOL | BRACKET | 1 | 33 | BYPASS KAPAĞI | BYPASS COVER | 1 |
| 15 | KONSOL (CEKETLİ) | BRACKET (w/HEATING JACKET) | 1 | 34 | TİJ KAPAK O-RİNG | CAP O-RING | 1 |
| 16 | KONSOL CONTASI | BRACKET GASKET | 1 | 35 | M8 SOMUN | NUT M8 | 1 |
| 17 | ARA GÖVDE (BORU DİŞLİ 90°) | CASING (90° THREADED PORTS) | 1 | 36 | 6 KÖŞE CİVATA M8x45 | ADJUSTING SCREW M8x45 | 1 |
| 18 | ARA GÖVDE (FLANŞLI 90°) | CASING (90° FLANGED PORTS) | 1 | 37 | TİJ KAPAĞI | CAP | 1 |
| 19 | ARA GÖVDE (FLANŞLI CEKETLİ 90°) | CASING (90° FLANGED PORTS & w/HEATING JACKET) | 1 | 38 | SETUSKUR M10x16 | GRUB SCREW M10x16 | 4 |



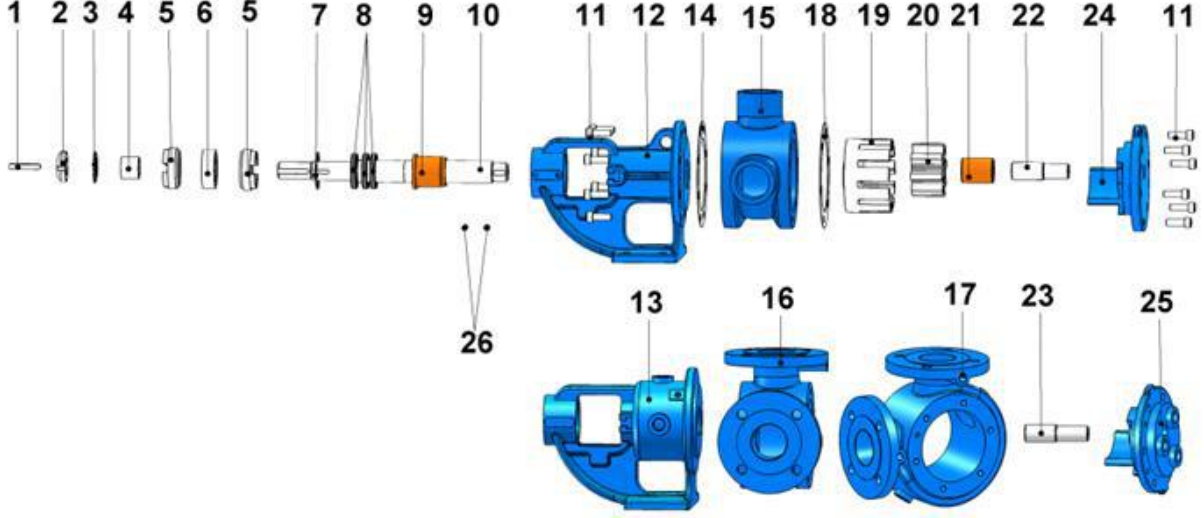
YEDEK PARÇA LİSTESİ / SPARE PARTS LIST
**MEKANİK SALMASTRALI, CEKETLİ VE KÖR KAPAKLI / SEALED WITH
MECHANICAL SEAL, JACKETED, AND WITH BLIND COVER**



| No | PARÇA İSMİ | PART NAME | ADET/ QTY. | No | PARÇA İSMİ | PART NAME | ADET/ QTY. |
|----|-----------------------|-------------------------|---------------|----|---------------------------------|---|---------------|
| 1 | KAMA 8x7x50 AB | COUPLING KEY 8x7x50 AB | 1 | 15 | KONSOL (CEKETLİ) | BRACKET (w/HEATING JACKET) | 1 |
| 2 | KİLİT SOMUNU | LOCK NUT | 1 | 16 | KONSOL CONTASI | BRACKET GASKET | 1 |
| 3 | KİLİT SACI | LOCK WASHER | 1 | 17 | ARA GÖVDE (BORU DİŞLİ 90°) | CASING (90° THREADED PORTS) | 1 |
| 4 | BİLEZİK | SPACER | 1 | 18 | ARA GÖVDE (FLANŞLI 90°) | CASING (90° FLANGED PORTS) | 1 |
| 5 | AYAR SOMUNU | ADJUSTING NUT | 2 | 19 | ARA GÖVDE (FLANŞLI CEKETLİ 90°) | CASING (90° FLANGED PORTS & w/HEATING JACKET) | 1 |
| 6 | RULMAN (2206-2RS) | BALL BEARING (2206-2RS) | 1 | 20 | KAPAK CONTASI | COVER GASKET | 1 |
| 7 | İÇ SEGMAN (ø62) | INTERNAL CIRCLIP (ø62) | 2 | 21 | ÇEVRE DİŞLİ | ROTOR GEAR | 1 |
| 8 | KEÇE ø35xø62x10 | LIP SEAL ø35xø62x10 | 1 | 22 | AVARA DİŞLİ | IDLER GEAR GEAR | 1 |
| 9 | RULMAN (6007) | BALL BEARING (6007) | 2 | 23 | AVARA DİŞLİ BURCU | IDLER BUSHING | 1 |
| 10 | MEKANİK SALMASTRA ø35 | MECHANICAL SEAL ø35 | 1 | 24 | KAPAK MİLİ | BYPASSED COVER PIN | 1 |
| 11 | MİL | SHAFT | 1 | 25 | CEKETLİ KAPAK MİLİ | JACKETD COVER PIN | 1 |
| 12 | İMBUS CİVATA M10x30 | INBUS BOLT M10x30 | 14 | 26 | KAPAK (KÖR) | BLIND COVER | 1 |
| 13 | GRESÖR R3/8" | GREASING FITTING R3/8" | 1 | 27 | KAPAK (CEKETLİ) | COVER (w/ HEATING JACKET) | 1 |
| 14 | KONSOL | BRACKET | 1 | 28 | SETUSKUR M10x16 | GRUB SCREW M10x16 | 4 |



YEDEK PARÇA LİSTESİ / SPARE PARTS LIST
**KEÇELİ, CEKETLİ VE KÖR KAPAKLI / SEALED WITH LIP SEAL, JACKETED
AND WITH BLIND COVER**



| No | PARÇA İSMİ | PART NAME | ADET/ QTY. | No | PARÇA İSMİ | PART NAME | ADET/ QTY. |
|----|---------------------|----------------------------|---------------|----|---------------------------------|---|---------------|
| 1 | KAMA 8x7x50 AB | COUPLING KEY 8x7x50 AB | 1 | 14 | KONSOL CONTASI | BRACKET GASKET | 1 |
| 2 | KİLİT SOMUNU | LOCK NUT | 1 | 15 | ARA GÖVDE (BORU DİŞLİ 90°) | CASING (90° THREADED PORTS) | 1 |
| 3 | KİLİT SACI | LOCK WASHER | 1 | 16 | ARA GÖVDE (FLANŞLI 90°) | CASING (90° FLANGED PORTS) | 1 |
| 4 | BİLEZİK | SPACER | 1 | 17 | ARA GÖVDE (FLANŞLI CEKETLİ 90°) | CASING (90° FLANGED PORTS & w/HEATING JACKET) | 1 |
| 5 | AYAR SOMUNU | ADJUSTING NUT | 2 | 18 | KAPAK CONTASI | COVER GASKET | 1 |
| 6 | RULMAN (2206-2RS) | BALL BEARING (2206-2RS) | 1 | 19 | ÇEVRE DİŞLİ | ROTOR GEAR | 1 |
| 7 | İÇ SEGMAN (ø56) | INTERNAL CIRCLIP (ø56) | 1 | 20 | AVARA DİŞLİ | IDLER GEAR GEAR | 1 |
| 8 | KEÇE ø35xø56x10 | LIP SEAL ø35xø56x10 | 3 | 21 | AVARA DİŞLİ BURCU | IDLER BUSHING | 1 |
| 9 | KONSOL BURCU | BRACKET BUSHING | 1 | 22 | KAPAK MİLİ | COVER PIN | 1 |
| 10 | MİL | SHAFT | 1 | 23 | CEKETLİ KAPAK MİLİ | JACKETD COVER PIN | 1 |
| 11 | IMBUS CİVATA M10x30 | INBUS BOLT M10x30 | 14 | 24 | KAPAK (KÖR) | BLIND COVER | 1 |
| 12 | KONSOL | BRACKET | 1 | 25 | KAPAK (CEKETLİ) | COVER (w/ HEATING JACKET) | 1 |
| 13 | KONSOL (CEKETLİ) | BRACKET (w/HEATING JACKET) | 1 | 26 | SETUSKUR M8x16 | GRUB SCREW M8x16 | 4 |