



**Applications**

- Drainage of wastewater from the attenuation tank, purifying tank and sewage tank in water treatment plant
- Drainage of waste water containing fibrous additives from leather factory and food processing factory.
- Sewage management, accumulated water, septic tank, stock farm.
- Pumping sewage form hotels, restaurants, schools and public buildings

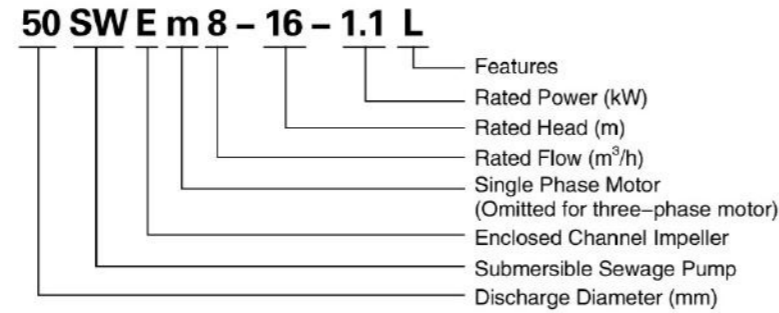
**Pump**

- High-efficiency & anti-clogging enclosed channel impeller
- Flexible installations with hoses, pipes or quick-coupling systems
- Float switch as standard accessory for single phase ( $\leq 1.1$ kw)
- Double-end mechanical seal
- Stainless steel welded shaft
- Liquid temperature: 0 - 40 °C
- Liquid PH value: 4 - 10
- Max. immersion depth: 5 m

**Motor**

- Frequency/Pole number: 50 Hz/2
- Insulation class: F
- Protection class: IPX8
- Bearing: Ball type

**Identification Codes**

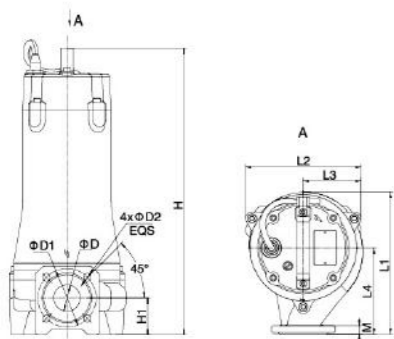


**Technical Data**

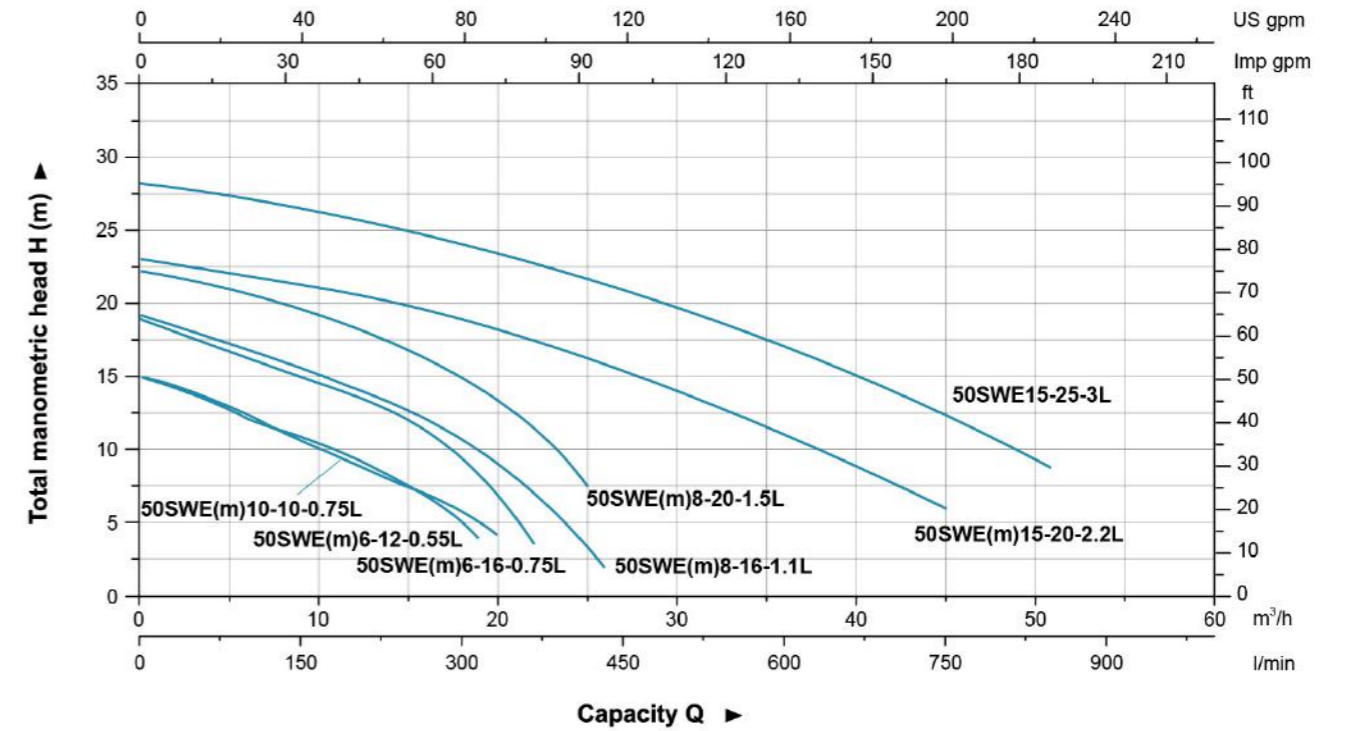
Model		Discharge mm (inch)	Power		Rated Flow (m³/h)	Max. Flow (m³/h)	Rated Head (m)	Max. Head (m)	Max. Solid Dia (mm)
Single Phase	Three Phase		kW	HP					
50SWE6-12-0.55L	50SWE6-12-0.55L	50 (2")	0.55	0.75	6	19	12	15	20
50SWE6-16-0.75L	50SWE6-16-0.75L	50 (2")	0.75	1	6	22	16	19	20
50SWE10-10-0.75L	50SWE10-10-0.75L	50 (2")	0.75	1	10	20	10	15	20
50SWE8-16-1.1L	50SWE8-16-1.1L	50 (2")	1.1	1.5	8	26	16	19	15
50SWE8-20-1.5L	50SWE8-20-1.5L	50 (2")	1.5	2	8	25	20	22	15
50SWE15-20-2.2L	50SWE15-20-2.2L	50 (2")	2.2	3	15	45	20	23	25
-	50SWE15-25-3L	50 (2")	3	4	15	51	25	27	25

**Dimension**

Model		L1	L2	L3	L4	H		H1	D	D1	D2	M
Single Phase	Three Phase					1~	3~					
50SWE6-12-0.55L	50SWE6-12-0.55L	212	184	96	120	461	461	65	45	110	14	14
50SWE6-16-0.75L	50SWE6-16-0.75L					479	479					
50SWE10-10-0.75L	50SWE10-10-0.75L	210	191	135	135	570	529	47	110	14	16	16
50SWE8-16-1.1L	50SWE8-16-1.1L	223				571	530					
50SWE8-20-1.5L	50SWE8-20-1.5L	227	221	112	163	-	561	70	50	110	14	16
50SWE15-20-2.2L	50SWE15-20-2.2L	268				-	561					
-	50SWE15-25-3L	-	-	-	-	-	-	-	-	-	-	-

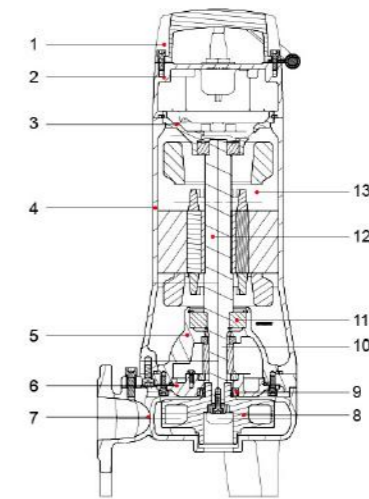


**Hydraulic Performance Curves**



**Materials Table**

No.	Part	Material
1	Handle	ZG45
2	Upper cover	HT200
3	Upper bearing seat	HT200
4	Motor body	HT200
5	Oil chamber	HT200
6	Pump cover	HT200
7	Pump body	HT200
8	Impeller	HT200
9	Oil seal	
10	Mechanical seal	Upper SiC/Carbon Lower SiC/SiC
11	Bearing	
12	Rotor	
13	Stator	



**Package Information**

Model		GW (kg)		L (mm)	W (mm)	H (mm)	Quantity (PCS/20'TEU)
Single Phase	Three Phase	1~	3~				
50SWE6-12-0.55L	50SWE6-12-0.55L	24.7	24	746	254	286	544
50SWE6-16-0.75L	50SWE6-16-0.75L	26	25.3	746	254	286	544
50SWE10-10-0.75L	50SWE10-10-0.75L	25.8	25	746	254	286	544
50SWE8-16-1.1L	50SWE8-16-1.1L	33.6	31.7	749	289	368	354
50SWE8-20-1.5L	50SWE8-20-1.5L	43.2	38.4	924	284	363	294
50SWE15-20-2.2L	50SWE15-20-2.2L	44.9	46.3	924	284	363	294
-	50SWE15-25-3L	-	49.5	874	284	363	316



**Applications**

- Drainage of wastewater from the attenuation tank, purifying tank and sewage tank in water treatment plant
- Drainage of waste water containing fibrous additives from leather factory and food processing factory.
- Sewage management, accumulated water, septic tank, stock farm.
- Pumping sewage form hotels, restaurants, schools and public buildings

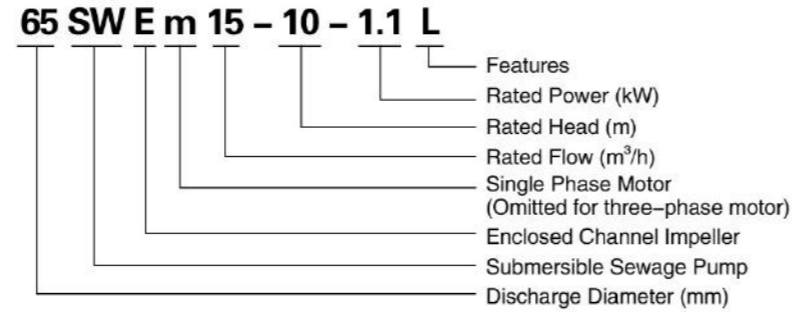
**Pump**

- High-efficiency & anti-clogging enclosed channel impeller
- Flexible installations with hoses, pipes or quick-coupling systems
- Float switch as standard accessory for single phase (≤1.1kW)
- Double-end mechanical seal
- Stainless steel welded shaft
- Liquid temperature: 0 - 40 °C
- Liquid PH value: 4 - 10
- Max. immersion depth: 5 m

**Motor**

- Frequency/Pole number: 50 Hz/2
- Insulation class: F
- Protection class: IPX8
- Bearing: Ball type

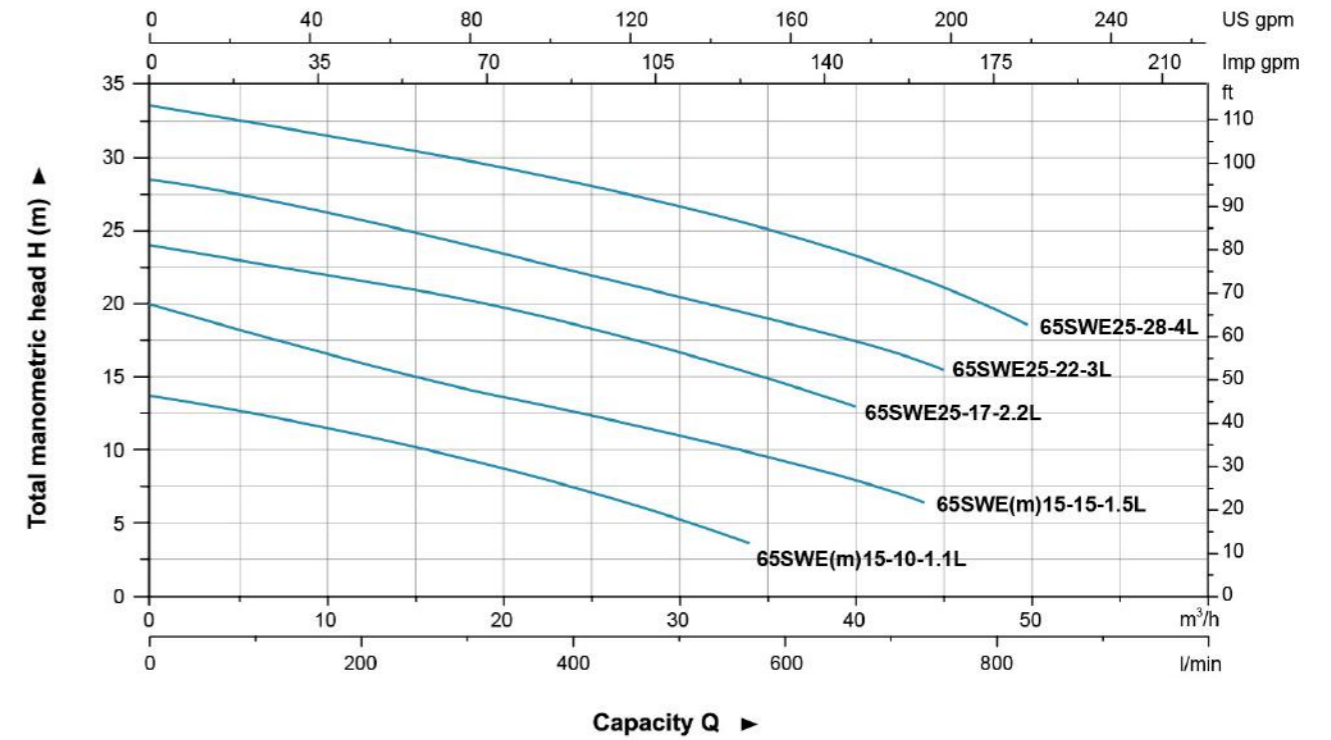
**Identification Codes**



**Technical Data**

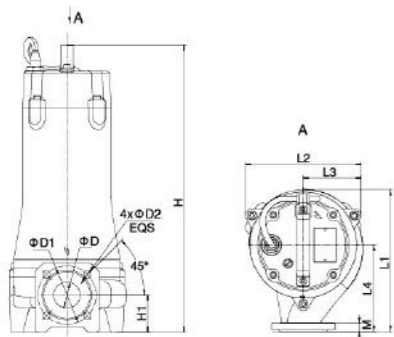
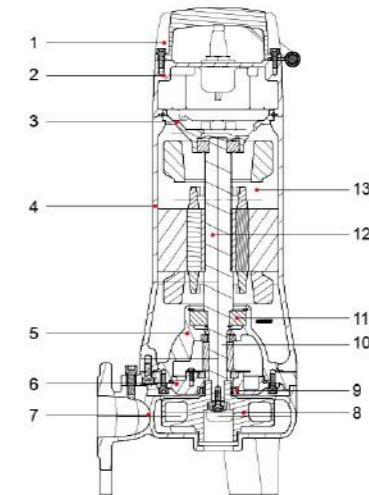
Model		Discharge mm (inch)	Power		Rated Flow (m³/h)	Max. Flow (m³/h)	Rated Head (m)	Max. Head (m)	Max. Solid Dia (mm)
Single Phase	Three Phase		kW	HP					
65SWEm15-10-1.1L	65SWE15-10-1.1L	65 (2.5")	1.1	1.5	15	34	10	14	25
65SWEm15-15-1.5L	65SWE15-15-1.5L	65 (2.5")	1.5	2	15	44	15	20	25
-	65SWE25-17-2.2L	65 (2.5")	2.2	3	25	40	17	24	25
-	65SWE25-22-3L	65 (2.5")	3	4	25	45	22	28.5	25
-	65SWE25-28-4L	65 (2.5")	4	5.5	25	50	28	31.5	25

**Hydraulic Performance Curves**



**Materials Table**

No.	Part	Material
1	Handle	ZG45
2	Upper cover	HT200
3	Upper bearing seat	HT200
4	Motor body	HT200
5	Oil chamber	HT200
6	Pump cover	HT200
7	Pump body	HT200
8	Impeller	HT200
9	Oil seal	
10	Mechanical seal	Upper:SiC/Carbon Lower:SiC/SiC
11	Bearing	
12	Rotor	
13	Stator	



**Dimension**

Model		L1	L2	L3	L4	H		H1	D	D1	D2	M
Single Phase	Three Phase					1~	3~					
65SWEm15-10-1.1L	65SWE15-10-1.1L	288				490	490					
65SWEm15-15-1.5L	65SWE15-15-1.5L					581	540					
-	65SWE25-17-2.2L	289	225	117	178	-	540	77.5	65	130	14	16
-	65SWE25-22-3L					-	571					
-	65SWE25-28-4L					-	571					

**Package Information**

Model		GW (kg)		L (mm)	W (mm)	H (mm)	Quantity (PCS/20'TEU)
Single Phase	Three Phase	1~	3~				
65SWEm15-10-1.1L	65SWE15-10-1.1L	37.9	35.8	749	289	368	354
65SWEm15-15-1.5L	65SWE15-15-1.5L	45.7	41.9	924	284	363	294
-	65SWE25-17-2.2L	-	44.1	924	284	363	294
-	65SWE25-22-3L	-	52	874	284	363	316
-	65SWE25-28-4L	-	55.1	874	284	363	316



Impeller

( Hose coupling as standard.  
Flange elbow is available on request. )

### Applications

- Drainage of wastewater from the attenuation tank, purifying tank and sewage tank in water treatment plant
- Drainage of waste water containing fibrous additives from leather factory and food processing factory.
- Sewage management, accumulated water, septic tank, stock farm.
- Pumping sewage form hotels, restaurants, schools and public buildings

### Pump

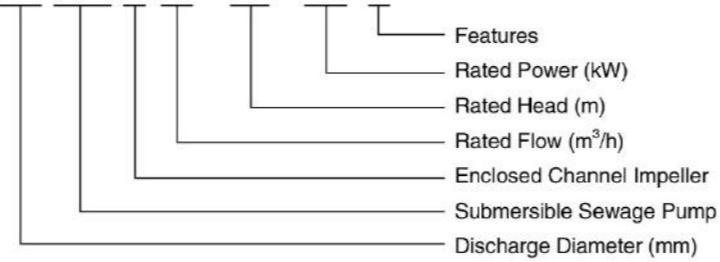
- High-efficiency & anti-clogging enclosed channel impeller
- Flexible installations with hoses, pipes or quick-coupling systems
- Double-end mechanical seal
- Stainless steel welded shaft
- Liquid temperature: 0 - 40 °C
- Liquid PH value: 4 - 10
- Max. immersion depth: 5 m

### Motor

- Frequency/Pole number: 50 Hz/2
- Insulation class: F
- Protection class: IPX8
- Bearing: Ball type

### Identification Codes

**80 SW E 40 - 9 - 2.2 L**

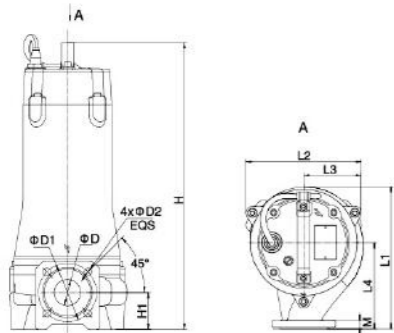


### Technical Data

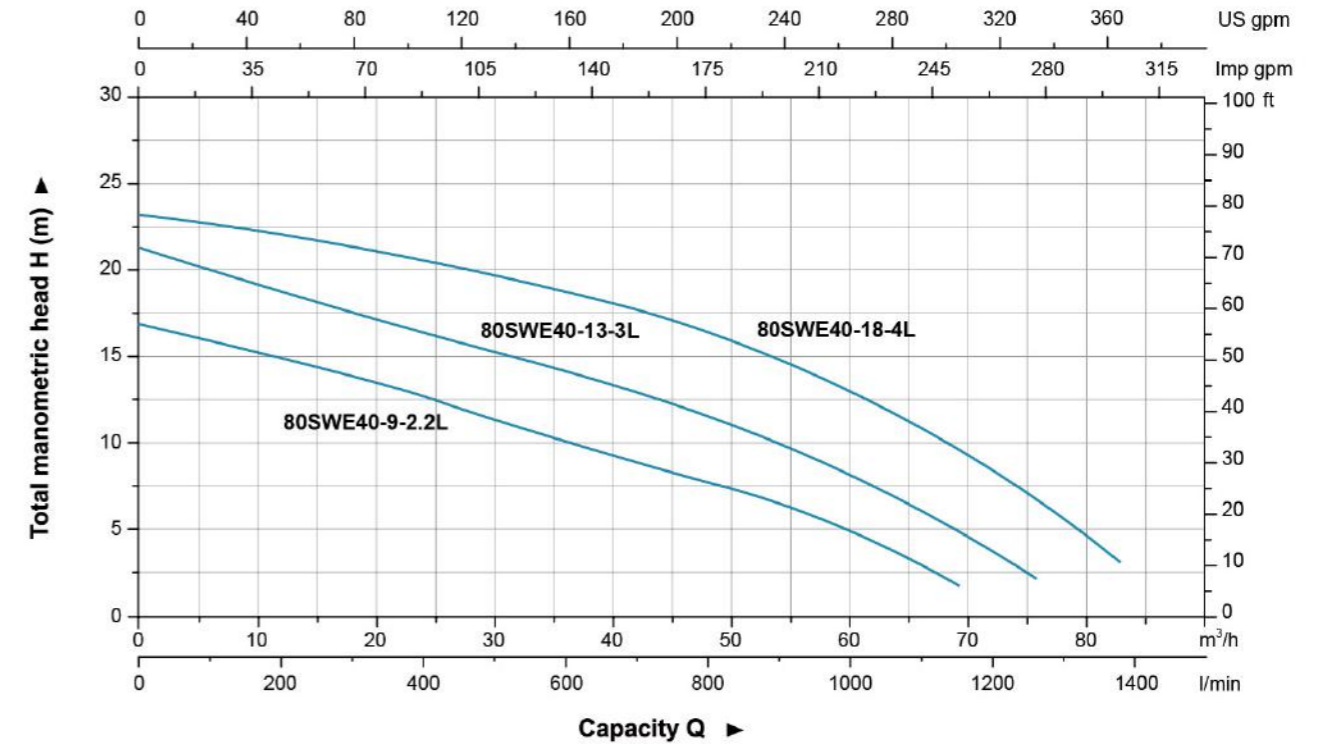
Model	Discharge mm (inch)	Power		Rated Flow (m <sup>3</sup> /h)	Max. Flow (m <sup>3</sup> /h)	Rated Head (m)	Max. Head (m)	Max. Solid Dia (mm)
		kW	HP					
80SWE40-9-2.2L	80(3")	2.2	3	40	69.5	9	17	30
80SWE40-13-3L	80(3")	3	4	40	76	13	21	30
80SWE40-18-4L	80(3")	4	5.5	40	83	18	23	30

### Dimension

Model	L1	L2	L3	L4	H	H1	D	D1	D2	M
80SWE40-9-2.2L										
80SWE40-13-3L	265	223	112	160	557	86	80	150	18	16
80SWE40-18-4L										

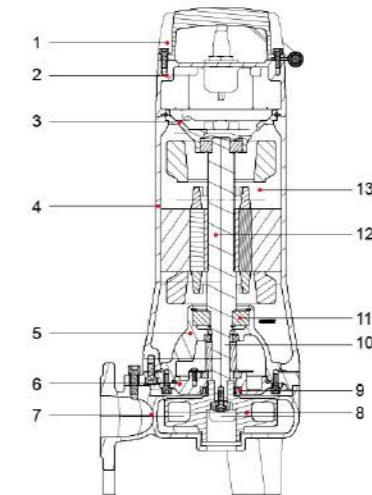


### Hydraulic Performance Curves



### Materials Table

No.	Part	Material
1	Handle	ZG45
2	Upper cover	HT200
3	Upper bearing seat	HT200
4	Motor body	HT200
5	Oil chamber	HT200
6	Pump cover	HT200
7	Pump body	HT200
8	Impeller	HT200
9	Oil seal	
10	Mechanical seal	Upper:SiC/Carbon Lower:SiC/SiC
11	Bearing	
12	Rotor	
13	Stator	



### Package Information

Model	GW (kg)	L (mm)	W (mm)	H (mm)	Quantity (PCS/20'TEU)
80SWE40-9-2.2L	46.4	924	284	363	294
80SWE40-13-3L	53.8	874	284	363	316
80SWE40-18-4L	56.3	874	284	363	316

**Applications**

- Used In pressure sewage system
- Drainage of wastewater from individual residences, apartment buildings, recreational developments, models
- Transferring wastewater of commercial buildings, industrial plants, wastewater sampling, small hospitals
- Schools, federal, state and local parks, wastewater drainage
- To transfer various wastewater and sewage

**Pump**

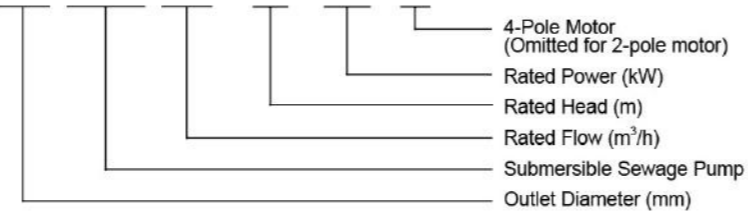
- Flexible installations with hoses, pipes or quick-coupling systems
- Double-end mechanical seal
- Stainless Steel welded shaft
- Liquid density  $\leq 1.2 \times 10^3 \text{ kg/m}^3$
- Liquid temperature: 0 - 40 °C
- Liquid PH value: 4 - 10
- Max. immersion Depth: 5 m

**Motor**

- Copper winding
- Insulation class: F
- Protection class: IPX8
- Voltage: 380V/50Hz 3-phase

**Identification Codes**

150 SWE 110 - 10 - 5.5 / 4



Impeller

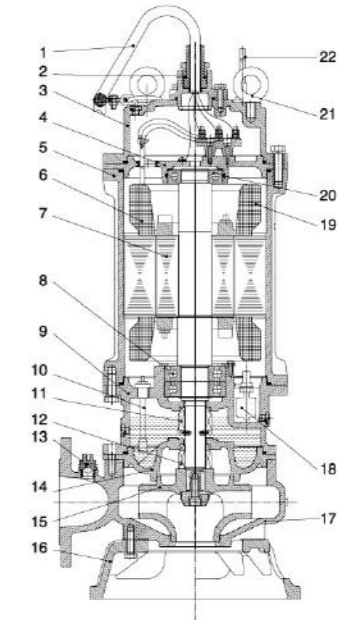
( Hose coupling as standard.  
Flange elbow is available on request. )



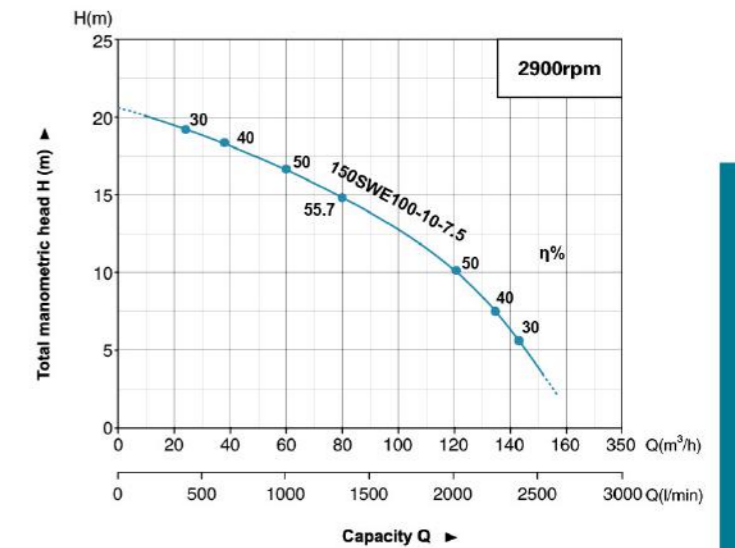
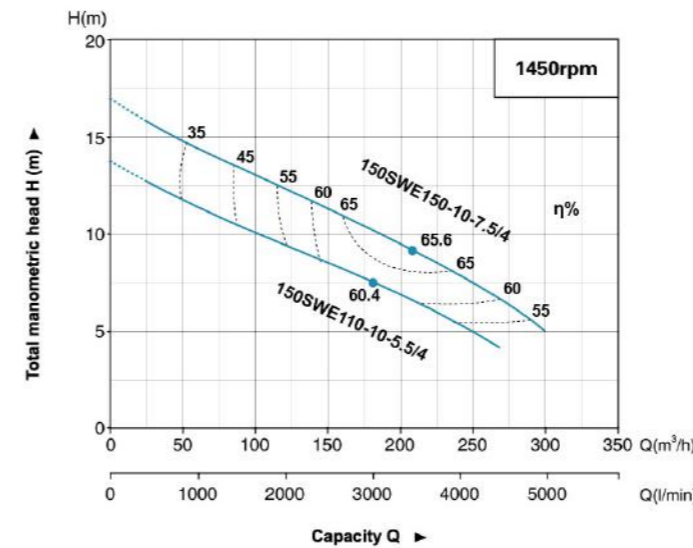
**Materials Table**

No.	Part	Material
1	Cable	
2	Cable holder	HT200
3	Upper cover	HT200
4	Upper bearing seat	HT200
5	Frame	HT200
6	Stator	
7	Rotor	
8	Bearing	
9	Oil chamber	HT200
10	* Detector	
11	Mechanical seal	Silicon/Carbon
12	Mechanical seal	Silicon/Silicon
13	Release valve	
14	Pump casing	HT200
15	Impeller	HT200
16	Baseplate	HT200
17	Pump body	HT200
18	* Floating switch	
19	* Thermal sensor	
20	Bearing	
21	Ring	06Cr19Ni10
22	*Signal cable	

Standard configuration not equipped with detector, floating switch, thermal sensor and signal cable, available on request.



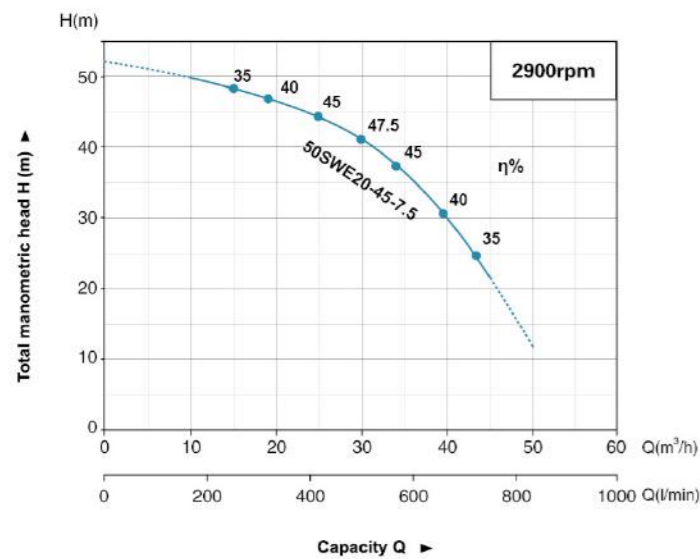
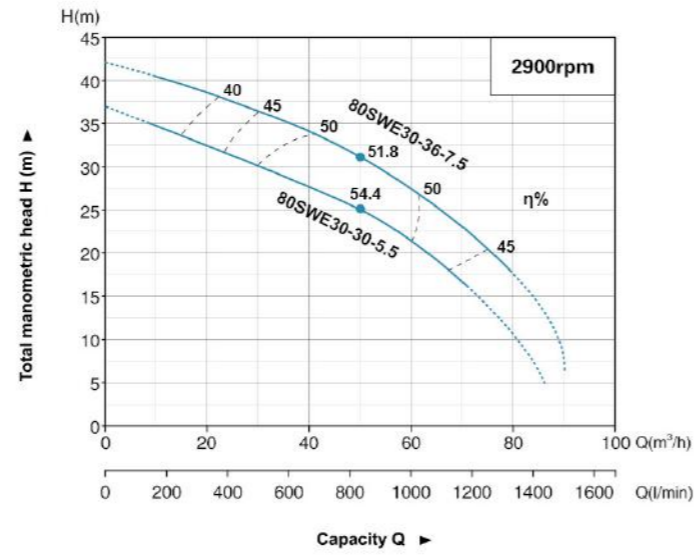
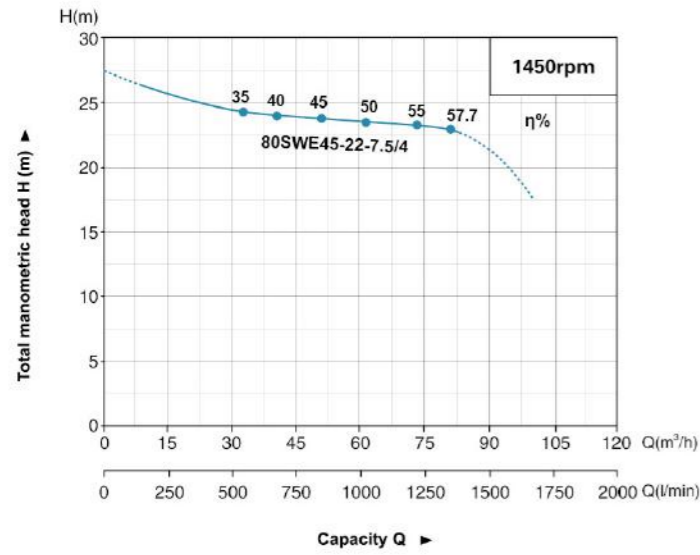
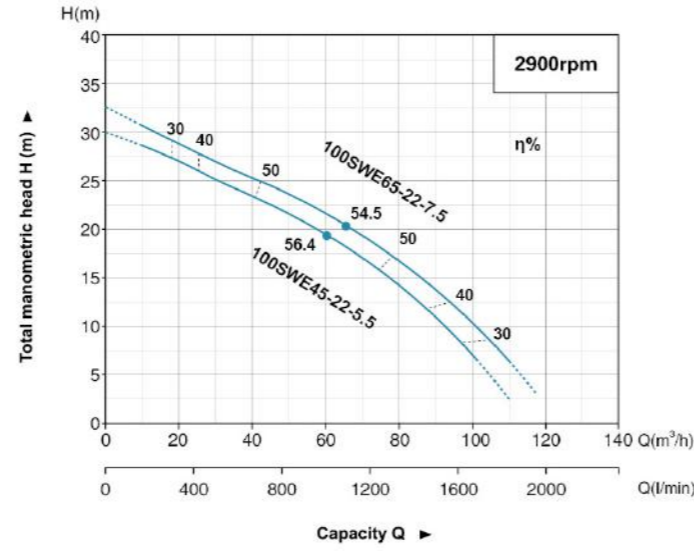
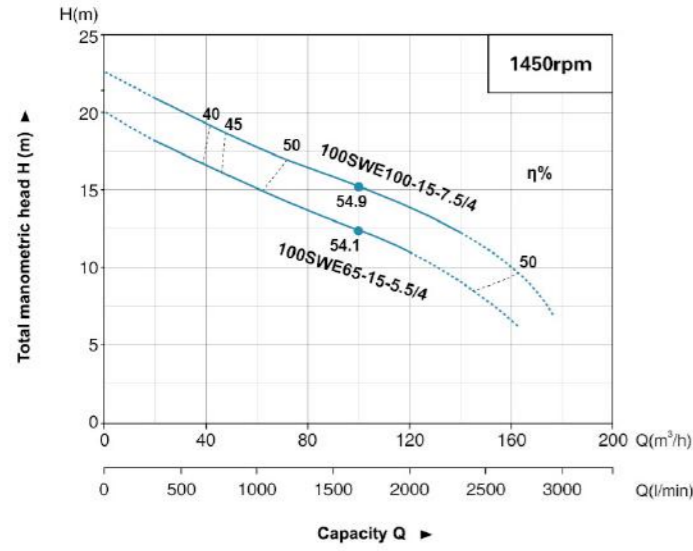
**Hydraulic Performance Curves**



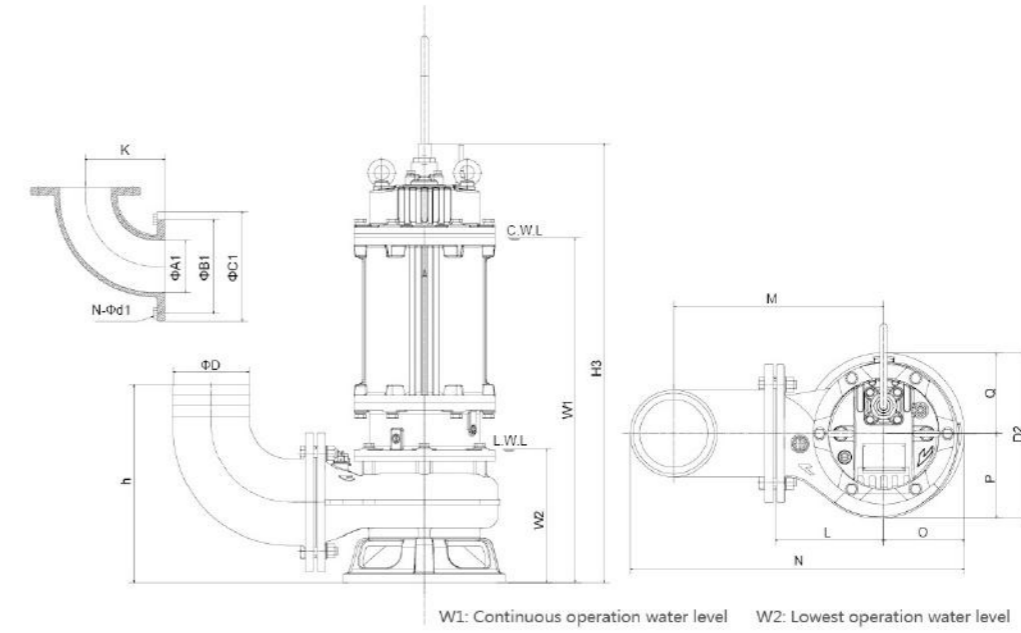
**Technical Data**

Model	Motor Power		Speed r.p.m	Max. Flow m³/h	Max. Head m	Discharge mm (inch)	Guide Rial Fitting	Max. Solid Dia mm	G.W kg	Packing Dimension mm
	kW	HP								
150SWE150-10-7.5/4	7.5	10	1450	300	16	150 (6")	150-150	75	160	1154x549x532
150SWE110-10-5.5/4	5.5	7.5	1450	260	12	150 (6")	150-150	75	155	1154x549x532
150SWE100-10-7.5	7.5	10	2900	150	20	150 (6")	150-150	35	120	1059x414x469
100SWE65-22-7.5	7.5	10	2900	108	31	100 (4")	100-100	35	118	1059x414x469
100SWE45-22-5.5	5.5	7.5	2900	100	28	100 (4")	100-100	30	93	954x404x437
100SWE100-15-7.5/4	7.5	10	1450	140	21	100 (4")	100-100	55	150	1154x549x532
100SWE65-15-5.5/4	5.5	7.5	1450	120	18	100 (4")	100-100	55	145	1154x549x532
80SWE30-36-7.5	7.5	10	2900	75	41	80 (3")	80-80	30	118	1059x414x469
80SWE30-30-5.5	5.5	7.5	2900	70	35	80 (3")	80-80	30	93	954x404x437
80SWE45-22-7.5/4	7.5	10	1450	80	26	80 (3")	80-80	30	150	1127x550x450
50SWE20-45-7.5	7.5	10	2900	45	50	50 (2")	50-50	20	120	1032x430x360

Hydraulic Performance Curves



Dimension



Model	ΦD	ΦA1	ΦB1	ΦC1	N-Φd1	h	W1	W2	H3	K	N	O	P	Q	L	M	D2
150SWE150-10-7.5/4	150	150	225	265	8-Φ18	465	756	330	910	230	770	195	217	170	300	500	387
150SWE110-10-5.5/4	150	150	225	265	8-Φ18	465	756	330	910	230	770	195	217	170	300	500	388
150SWE100-10-7.5	150	150	225	265	8-Φ18	379	660	241	811	230	640	145	162	155	210	410	317
100SWE65-22-7.5	100	100	170	210	4-Φ18	315	639	220	790	150	530	155	155	155	200	340	310
100SWE45-22-5.5	100	100	170	210	4-Φ18	315	609	220	744	150	530	155	155	155	200	340	310
100SWE100-15-7.5/4	100	100	170	210	4-Φ18	390	722	295	873	150	655	187	200	175	280	420	373
100SWE65-15-5.5/4	100	100	170	210	4-Φ18	390	722	295	873	150	655	187	200	175	280	420	373
80SWE30-36-7.5	80	80	150	190	4-Φ18	332	640	215	785	140	520	143	155	155	200	335	310
80SWE30-30-5.5	80	80	150	190	4-Φ18	332	607	215	735	140	515	136	155	155	200	335	310
80SWE45-22-7.5/4	80	80	150	190	4-Φ18	390	679	285	880	155	615	173	179	260	395	349	390
50SWE20-45-7.5	50	50	110	140	4-Φ14	284	626	221	777	105	484	133	137.5	200	320	272	284



## Guide Rail System

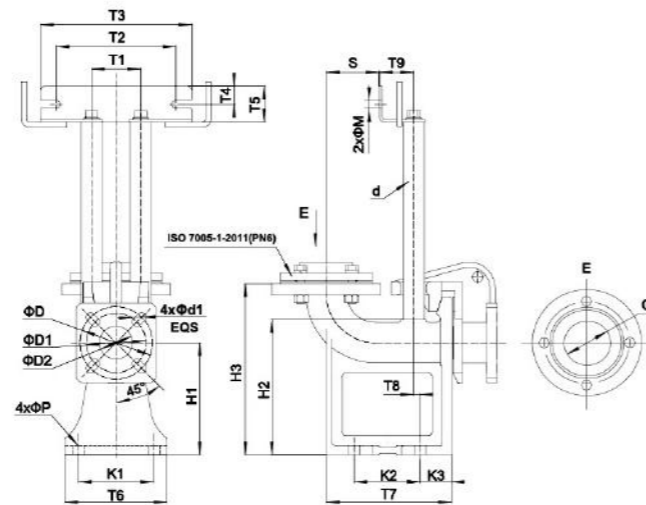
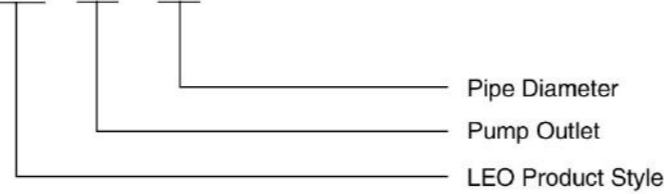
- Suitable for pumps with flange conforming ISO7005-92 standard.
- Automatic engagement with flanged elbow

### Includes

- Duck-foot bend
- Guide hook
- Flange connector
- Upper guide support
- Bolts and lock washers  
(Foundation bolts and guide pipes are not included)

### Identification Codes

**SW 50 - 50**



### Dimension

Model	D	D1	D2	T1	T2	T3	T4	T5	T6	T7	T8	T9	K1	K2	K3	H1	H2	H3	S	M	P	d	d1	G
SW50-50(PN6)	110	90	50	75	182	230	28	55	165	190	12	52.5	115	100	45	170	205	260	80.5	12	18	25	14	G2
SW65-65(PN6)	130	-	65	85	182	230	28	55	190	210	17	59	145	120	45	175	220	270	89	12	18	32	14	G2.5
SW80-80(PN6)	150	-	80	85	182	230	28	55	220	242	27	59	175	160	41	180	246	290	115	12	18	32	18	G3

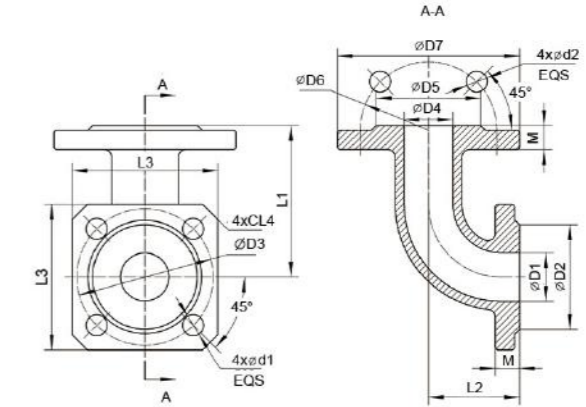
### Package Information: Carton ( Wooden Case Optional )

Model	Carton				Wooden Case			
	L (mm)	W (mm)	H (mm)	G.W (kg)	L (mm)	W (mm)	H (mm)	G.W (kg)
SW50-50(PN6)	390	345	260	18.5	410	355	250	23
SW65-65(PN6)	430	375	285	24	440	375	275	28
SW80-80(PN6)	475	410	310	32.5	485	405	305	36

## Flange Elbow



### Dimension

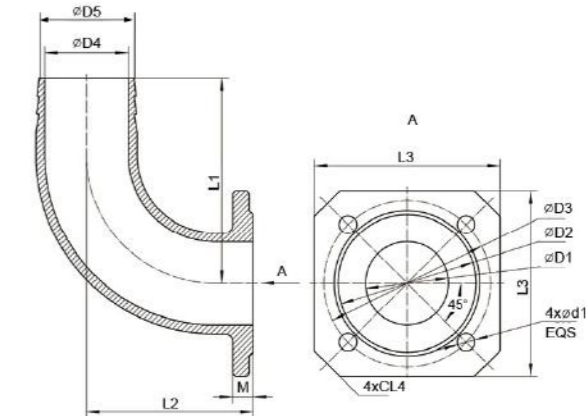


Model	D1	D2	D3	D4	D5	D6	D7	L1	L2	L3	L4	M	d1	d2
32-32 Flange Elbow	32	69	90	32	69	90	120	100	60	96	10	16	14	14
40-50 Flange Elbow	40	78	100	50	88	110	140	120	60	110	15	16	14	14
50-50 Flange Elbow	50	88	110	50	88	110	140	105	105	120	15	16	14	14
65-65 Flange Elbow	65	108	130	65	108	130	160	130	130	145	20	16	14	14
80-80 Flange Elbow	80	124	150	80	124	150	190	155	155	145	15	18	18	18

## Hose Coupling



### Dimension



Model	D1	D2	D3	D4	D5	L1	L2	L3	L4	M	d1
• 50-40 Hose Coupling	50	88	110	38	48	115	65	120	15	16	14
• 65-50 Hose Coupling	65	108	130	51	61	125	68	145	20	16	14
• 80-60 Hose Coupling	80	124	150	60	70	140	75	145	15	16	18
50-50 Hose Coupling	50	88	110	50	58	140	120	120	15	16	14
65-65 Hose Coupling	65	108	130	65	74	160	130	145	20	18	14
80-80 Hose Coupling	80	124	150	80	87	190	135	145	15	18	18

• Product standard