



Application

- Water supply: Pressure boosting for main pipes and high-rise buildings
- Industrial pressure boosting: Water system, cleaning system, high pressure washing system and firefighting system
- Pressure boosting for pressure tank, sprinkling irrigation and trichling irrigation
- Air conditioner, cooling system and industrial cleaning

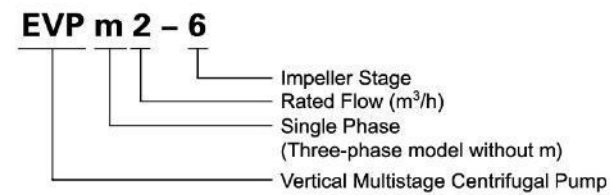
Features

- Economic vertical multistage pumps
- Applicable for a wide scope of different temperatures, flow rates and pressure ranges
- Water inlet and outlet can be rotated for proper assembly in accordance with installation requirement
- Easy installation and maintenance
- Advanced hydraulic model design, featuring stable operation and high efficiency
- Cast iron water inlet and outlet with special anti-rust treatment
- High-strength engineering plastic flow passage components
- Reliable stainless steel welded shaft

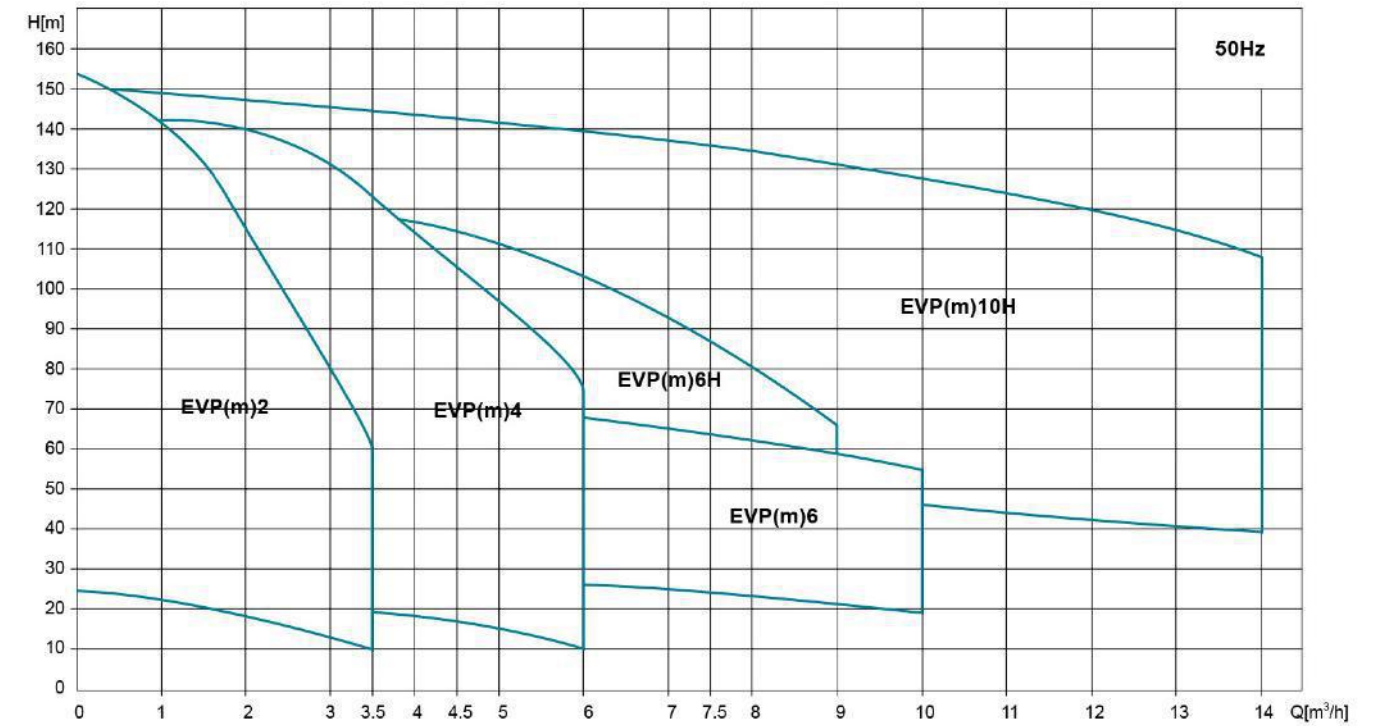
Working Conditions

- Liquid temperature: +5°C ~ 60°C
- Max. ambient temperature: +40°C
- Max. pressure: 15 bar
- Altitude: up to 1000 m
- Standard voltage: Single-phase: 220~240V/50Hz
Three-phase: 380~415V/50Hz

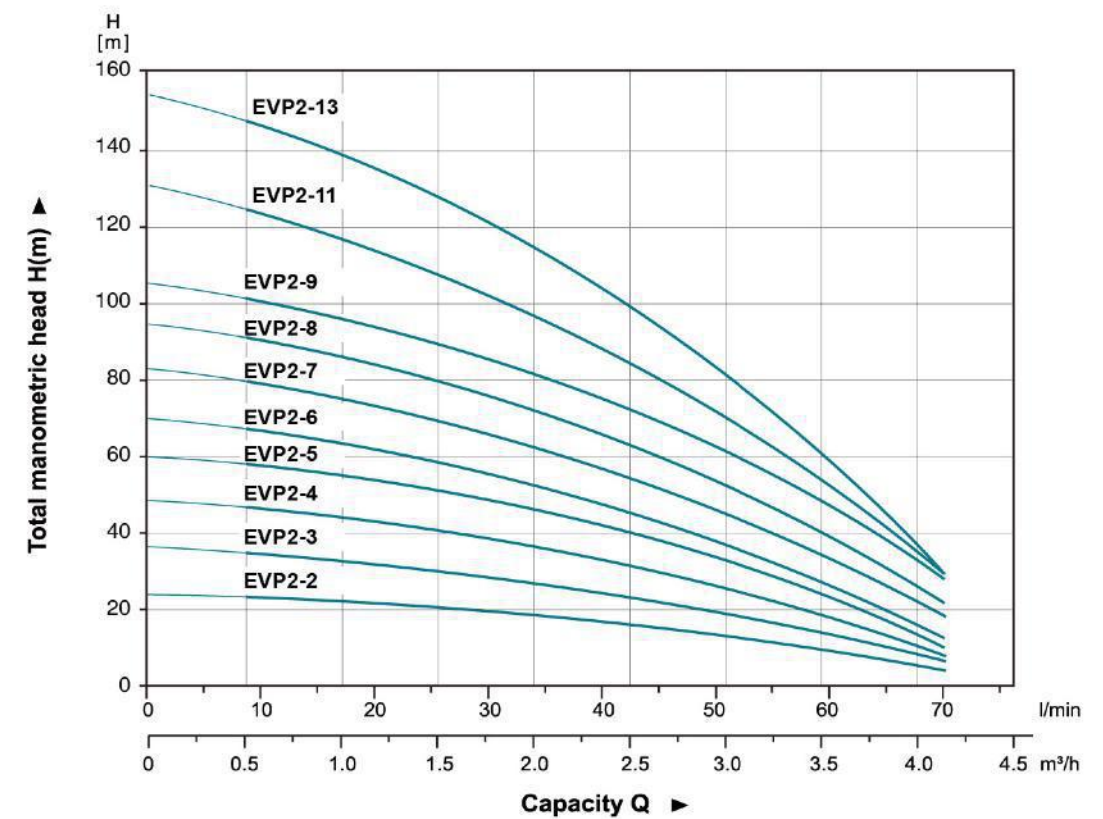
Identification Codes



Scope of Performance

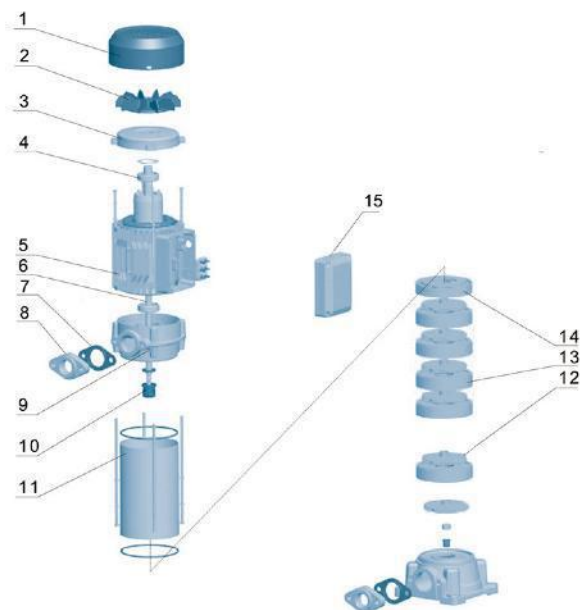


Hydraulic Performance Curves

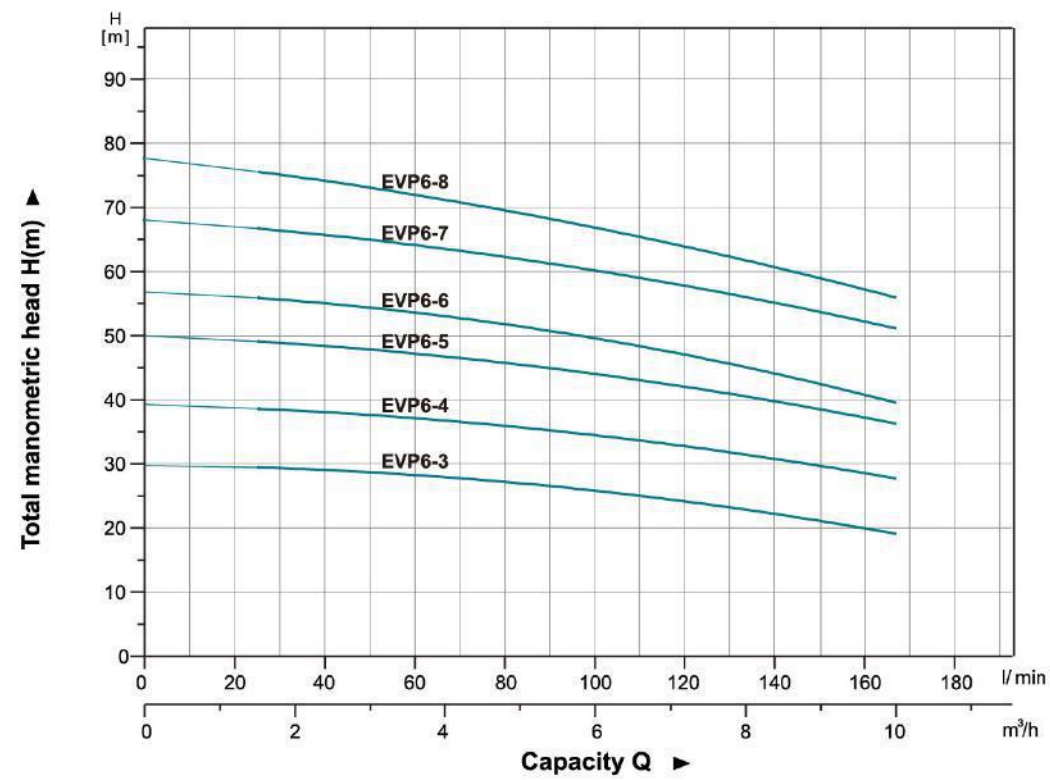
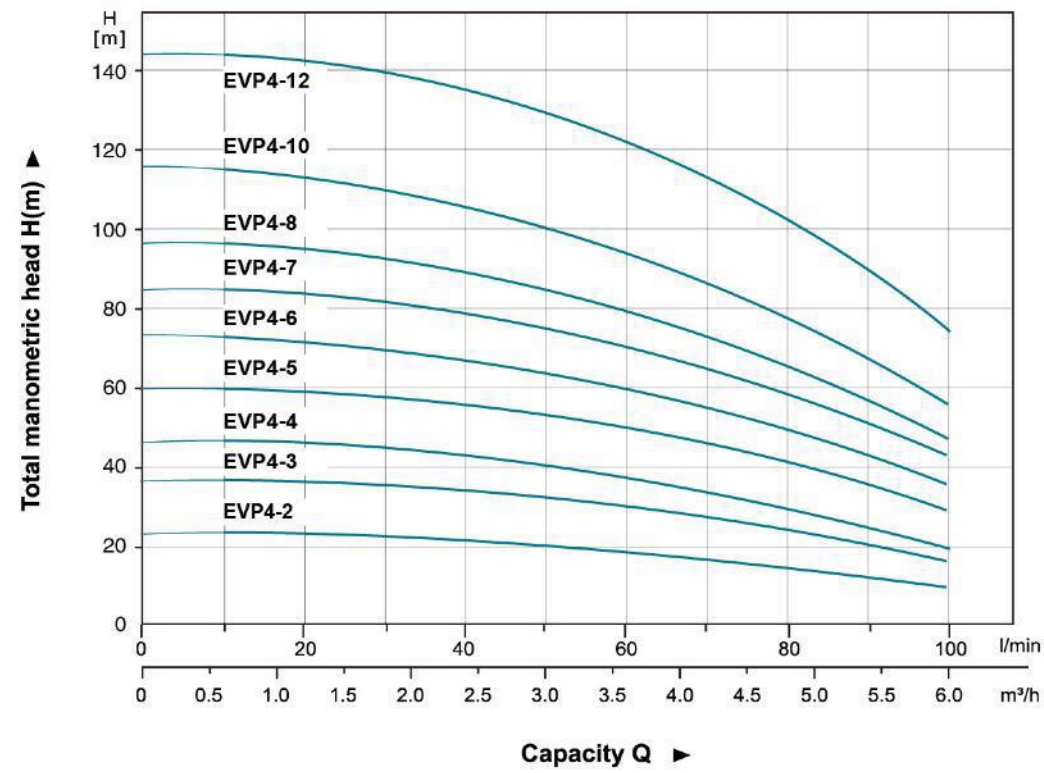


Materials Table

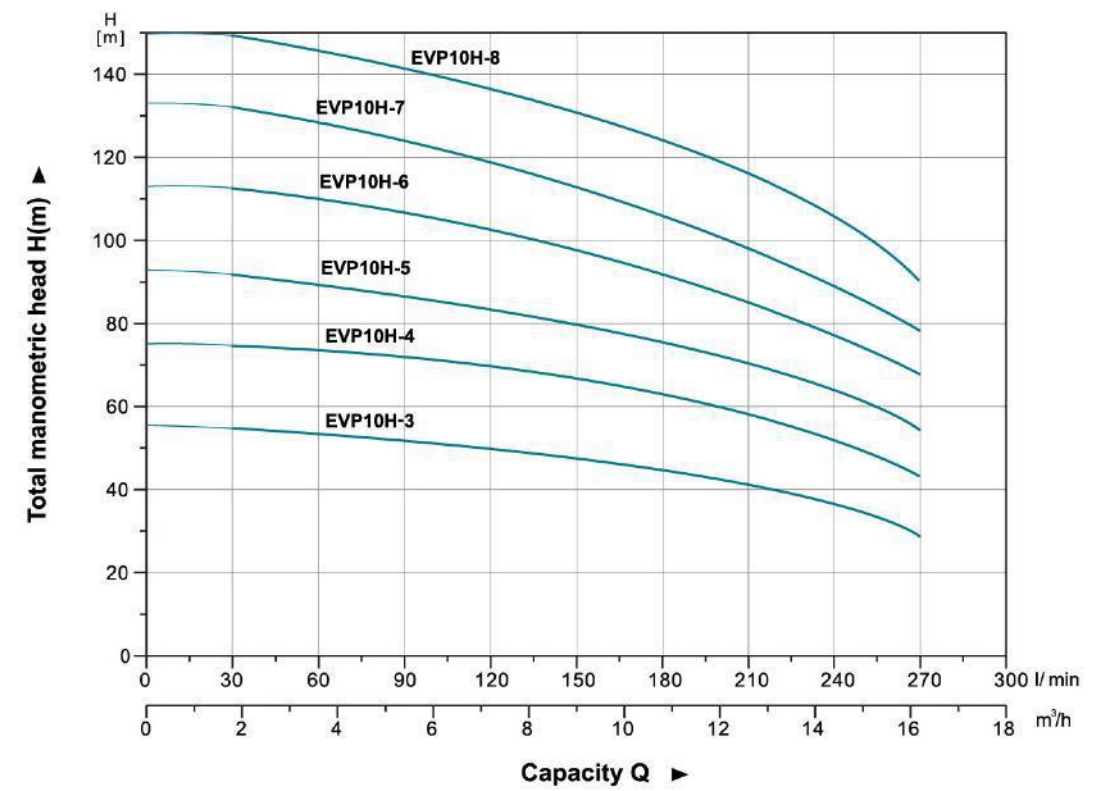
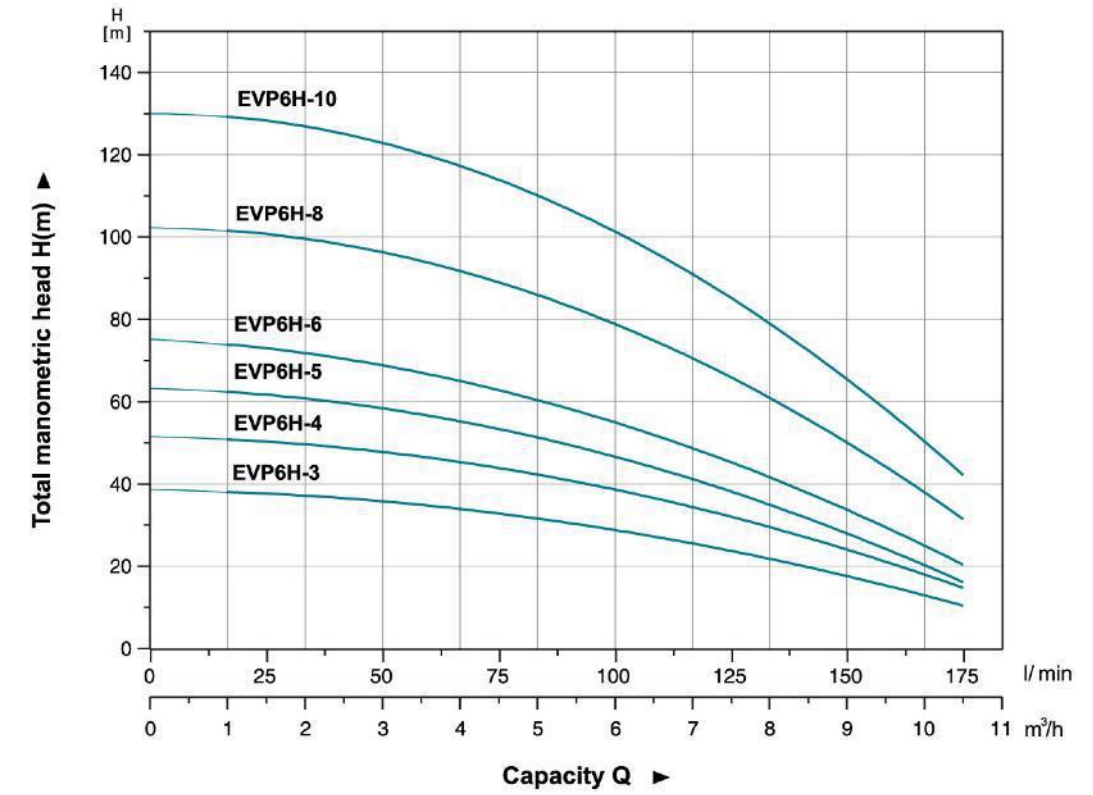
No.	Part	Material
1	Fan cover	Ø8F
2	Fan	PP
3	Rear cover	Cast iron
4	Bearing	
5	Stator	
6	Rotor	
7	Gasket	Rubber
8	Flange	Cast iron
9	Motor bracket	Aluminum
10	Mechanical seal	Ceramic/Carbon
11	Pump barrel	AISI 304
12	Impeller	Plastic
13	Diffuser	Plastic
14	Last stage diffuser	Plastic
15	Capacitor box	Plastic



Hydraulic Performance Curves



Hydraulic Performance Curves



Technical Data

Model		Power (P2)		Q (m³/h)	0	1	2	3	4
Single-phase	Three-phase	kW	HP	Q (l/min)	0	16.7	33.3	50	66.7
EVPm2-2	EVP2-2	0.37	0.5	H (m)	24	23	18	13	6
EVPm2-3	EVP2-3	0.55	0.75		36	33	26	20	9
EVPm2-4	EVP2-4	0.75	1.0		48	45	35	26	11
EVPm2-5	EVP2-5	1.0	1.5		59	57	44	33	15
EVPm2-6	EVP2-6	1.0	1.5		69	65	52	37	18
EVPm2-7	EVP2-7	1.1	1.5		82	75	62	45	25
EVPm2-8	EVP2-8	1.5	2.0		94	87	72	52	28
EVPm2-9	EVP2-9	1.5	2.0		105	98	82	60	35
EVPm2-11	EVP2-11	1.8	2.5		130	119	98	69	37
-	EVP2-13	2.2	3.0		153	142	115	80	39

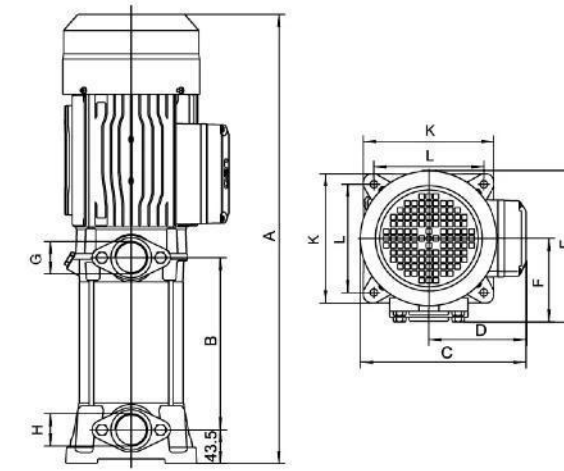
Model		Power (P2)		Q (m³/h)	0	1	2	3	4	5	6
Single-phase	Three-phase	kW	HP	Q (l/min)	0	16.7	33.3	50	66.7	83.3	100
EVPm4-2	EVP4-2	0.55	0.75	H (m)	24	23	22	21	18	15	10
EVPm4-3	EVP4-3	0.75	1.0		37	36	34	33	29	24	16
EVPm4-4	EVP4-4	1.0	1.5		47	46	45	41	36	28	20
EVPm4-5	EVP4-5	1.5	2.0		61	58	57	55	48	39	29
EVPm4-6	EVP4-6	1.5	2.0		74	72	69	66	57	47	36
-	EVP4-7	2.2	3.0		86	83	81	77	68	57	43
-	EVP4-8	2.2	3.0		98	95	92	86	76	63	47
-	EVP4-10	2.2	3.0		116	114	110	102	90	73	57
-	EVP4-12	3.0	4.0		145	142	140	131	115	97	75

Model		Power (P2)		Q (m³/h)	0	1	2	3	4	5	6	7	8	9	10
Single-phase	Three-phase	kW	HP	Q (l/min)	0	16.7	33.3	50	66.7	83.3	100	116.7	133.3	150	166.7
EVPm6-3	EVP6-3	1.1	1.5	H (m)	30	29.5	29	28.5	28	27	26	24.5	23	21	19
EVPm6-4	EVP6-4	1.5	2.0		40	38.5	37.5	37.3	37	36	34	33.5	32	30	27
-	EVP6-5	2.2	3.0		50	49	48.5	48.3	48	45	43	42	41	39	36
-	EVP6-6	2.2	3.0		58	56	54	53.5	53	52	51	48	45	41	40
-	EVP6-7	3.0	4.0		68	67	66.5	65	63.5	62	60	58	56	54	51
-	EVP6-8	3.0	4.0		78	75	73	72	71	70	68	65	62	59	55

Model		Power (P2)		Q (m³/h)	0	1	2	3	4.5	6	7.5	9	10.5
Single-phase	Three-phase	kW	HP	Q (l/min)	0	16.7	33.3	50	75	100	125	150	175
EVPm6H-3	EVP6H-3	1.1	1.5	H (m)	39	38	37	35	33	29	24	18	10
EVPm6H-4	EVP6H-4	1.5	2		52	51	49	47	44	39	32	25	14
EVPm6H-5	EVP6H-5	1.8	2.5		64	62	60	58	54	47	38	28	16
-	EVP6H-6	2.2	3		76	74	71	68	63	56	45	34	20
-	EVP6H-8	3.0	4		103	100	97	95	90	80	66	50	31
-	EVP6H-10	4.0	5.5		130	127	124	121	114	103	86	66	41

Model	Power (P2)		Q (m³/h)	0	2	4	6	8	10	12	14	16
Three-phase	kW	HP	Q (l/min)	0	33	67	100	133	167	200	233	267
EVP10H-3	3.0	4.0	H (m)	56	55	54	52	49	46	42	39	29
EVP10H-4	4.0	5.5		75	74	72	70	67	64	60	53	43
EVP10H-5	5.5	7.5		93	91	87	84	81	77	72	64	55
EVP10H-6	5.5	7.5		113	110	107	104	100	96	87	78	68
EVP10H-7	7.5	10		132	128	124	120	116	112	103	93	80
EVP10H-8	7.5	10		150	147	143	139	134	127	120	108	92

Dimension



Model		Power (P2)	A	B	C	D	E	F	G	H	K	L
Single-phase	Three-phase	kW										
EVPm2-2	EVP2-2	0.37	382	122	193	110	202	114.5	G1	G1	166	140.5
EVPm2-3	EVP2-3	0.55	406	146	193	110	202	114.5	G1	G1	166	140.5
EVPm2-4	EVP2-4	0.75	430	170	193	110	202	114.5	G1	G1	166	140.5
EVPm2-5	EVP2-5	1.0	454	194	193	110	202	114.5	G1	G1	166	140.5
EVPm2-6	EVP2-6	1.0	478	218	193	110	202	114.5	G1	G1	166	140.5
EVPm2-7	EVP2-7	1.1	545	248.5	210	125	202	114.5	G1	G1	166	140.5
EVPm2-8	EVP2-8	1.5	569	272.5	210	125	202	114.5	G1	G1	166	140.5
EVPm2-9	EVP2-9	1.5	593	296.5	210	125	202	114.5	G1	G1	166	140.5
EVPm2-11	EVP2-11	1.8	641	344.5	210	125	202	114.5	G1	G1	166	140.5
-	EVP2-13	2.2	689	392.5	210	125	202	114.5	G1	G1	166	140.5
EVPm4-2	EVP4-2	0.55	382	122	193	110	202	114.5	G1	G1	166	140.5
EVPm4-3	EVP4-3	0.75	406	146	193	110	202	114.5	G1	G1	166	140.5
EVPm4-4	EVP4-4	1.0	430	170	193	110	202	114.5	G1	G1	166	140.5
EVPm4-5	EVP4-5	1.5	497	200.5	210	125	202	114.5	G1	G1	166	140.5
EVPm4-6	EVP4-6	1.5	521	224.5	210	125	202	114.5	G1	G1	166	140.5
-	EVP4-7	2.2	545	248.5	210	125	202	114.5	G1	G1	166	140.5
-	EVP4-8	2.2	569	272.5	210	125	202	114.5	G1	G1	166	140.5
-	EVP4-10	2.2	617	320.5	210	125	202	114.5	G1	G1	166	140.5
-	EVP4-12	3.0	731	374	240	141	218	121.5	G1	G1	166	140.5
EVPm6-3	EVP6-3	1.1	487	190	210	125	198.5	110	G1 1/4	G1 1/4	166	140.5
EVPm6-4	EVP6-4	1.5	524	227	210	125	198.5	110	G1 1/4	G1 1/4	166	140.5
-	EVP6-5	2.2	561	264	210	125	198.5	110	G1 1/4	G1 1/4	166	140.5
-	EVP6-6	2.2	598	301	210	125	198.5	110	G1 1/4	G1 1/4	166	140.5
-	EVP6-7	3.0	685	338	221	134	198.5	110	G1 1/4	G1 1/4	166	140.5
-	EVP6-8	3.0	722	375	221	134	198.5	110	G1 1/4	G1 1/4	166	140.5
EVPm6H-3	EVP6H-3	1.1	457	158.5	210	125	202	114.5	G1 1/4	G1 1/2	166	140.5
EVPm6H-4	EVP6H-4	1.5	483.5	185	210	125	202	114.5	G1 1/4	G1 1/2	166	140.5
EVPm6H-4	EVP6H-5	1.5	510	211.5	210	125	202	114.5	G1 1/4	G1 1/2	166	140.5
-	EVP6H-6	2.2	536.5	238	210	125	202	114.5	G1 1/4	G1 1/2	166	140.5
-	EVP6H-8	3.0	655	297.5	210	141	218	121.5	G1 1/4	G1 1/2	166	140.5
-	EVP6H-10	4.0	708	350.5	210	141	218	121.5	G1 1/4	G1 1/2	166	140.5
-	EVP10H-3	3.0	554.5	187	2410	141	227.5	127.5	G1 1/4	G1 1/2	192	164
-	EVP10H-4	4.0	577.5	220	240	141	227.5	127.5	G1 1/4	G1 1/2	192	164
-	EVP10H-5	5.5	647	253	262	152	237.5	128.5	G1 1/4	G1 1/2	192	164
-	EVP10H-6	5.5	680	286	262	152	237.5	128.5	G1 1/4	G1 1/2	192	164
-	EVP10H-7	7.5	713	319	262	152	237.5	128.5	G1 1/4	G1 1/2	192	164
-	EVP10H-8	7.5	746	352	262	152	237.5	128.5	G1 1/4	G1 1/2	192	164