



Application

- Can be used to transfer clean water or other liquids similar to water in physical and chemical properties
- Suitable for water supply and drainage in garden irrigation, greenhouses, fish breeding and poultry raising. The pump also can be used for domestic automatic water supply places, such as lifting water from a deep well, pressure boosting of running water, etc.

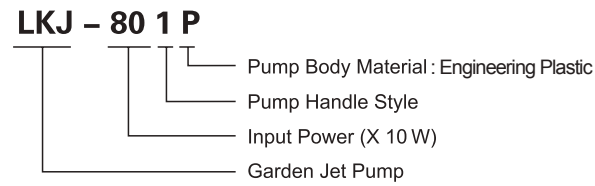
Pump

- Unique ergonomic design
- Max. fluid temperature: +35°C
- Max. suction: +8 m

Motor

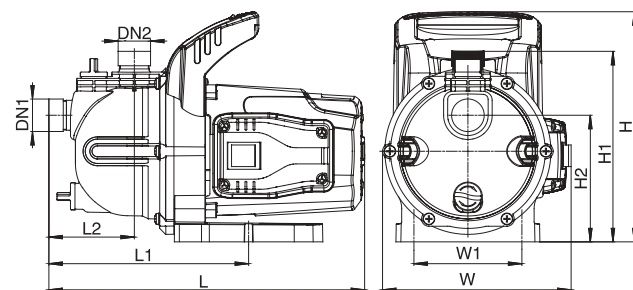
- C&U bearing
- Built-in thermal protector
- Aluminum winding
- Insulation class: F
- Protection class: IPX4
- Max. ambient temperature: +40°C

Identification Codes



Technical Data

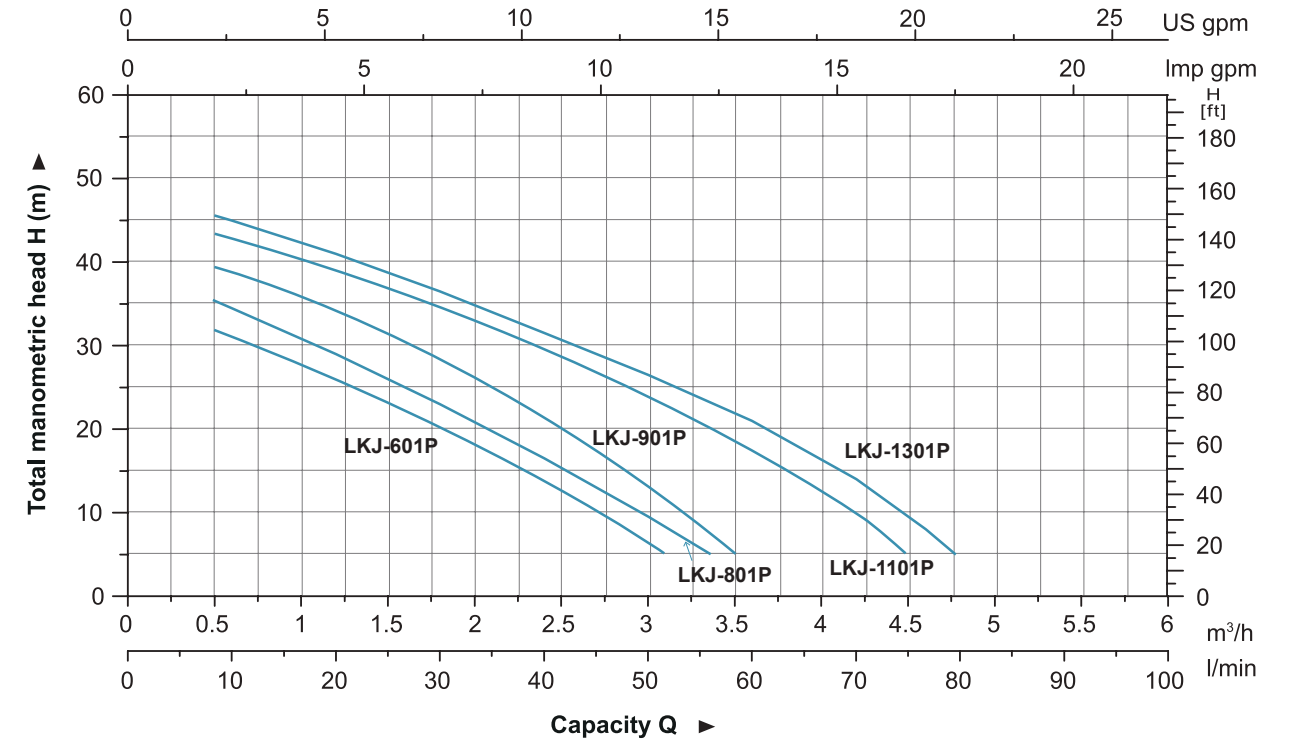
MODEL	POWER (P ₂)		Q (m ³ /h)													
	W	HP	Q (l/min)	0	0.6	1.2	1.8	2.4	3	3.6	4.2	4.8	5.4	6		
LKJ-601P	600	0.8	H (m)	35	31	25.5	20	14	8	-	-	-	-	-		
LKJ-801P	800	1.1		39	34.5	29	23	16.5	9.5	-	-	-	-	-		
LKJ-901P	900	1.2		43	39	34	28	21	12.5	3	-	-	-	-		
LKJ-1101P	1100	1.5		46	43	39	35	30	24	17	8	-	-	-		
LKJ-1301P	1300	1.75		48	45	41	36.5	31.5	26.5	21	14	8	-	-		



Dimension

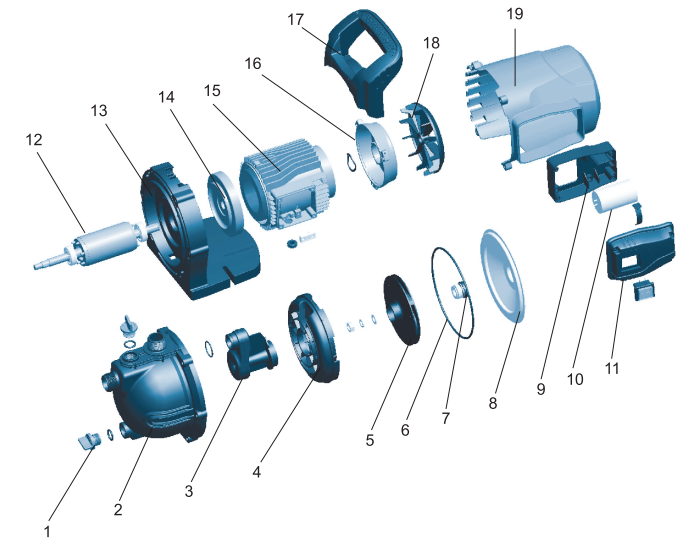
Model	DN1	DN2	L (mm)	W (mm)	H (mm)	L1 (mm)	L2 (mm)	W1 (mm)	H1 (mm)	H2 (mm)
LKJ-601P	1"	1"	350	210	255.5	221.5	94.5	120	211	140.5
LKJ-801P			350	210	255.5	221.5	94.5	120	211	140.5
LKJ-901P			380.5	243.5	284	233.5	106.5	120	231.5	165
LKJ-1101P			380.5	243.5	284	233.5	106.5	120	231.5	165
LKJ-1301P			380.5	243.5	284	233.5	106.5	120	231.5	165

Hydraulic Performance Curves



Materials Table

No.	Part	Material
1	Drain plug	PP
2	Pump body	PP
3	Enjector	PPO
4	Diffuser	PPO
5	Impeller	PPO
6	O-ring	NBR
7	Mechanical seal	Carbon/Ceramic
8	Bracket cover	AISI 304
9	Terminal board	ABS
10	Capacitor	
11	Switch cover	ABS
12	Rotor	
13	Motor flange	PP
14	Front plate	ZL102
15	Stator	
16	Rear cover	ZL102
17	Handle	PP
18	Fan	PP
19	Fan cover	ABS



Package Information

Model	GW (Kgs)	L (mm)	W (mm)	H (mm)	Quantity		
					20'/pcs	40'/pcs	40H'/pcs
LKJ-601P	6.8	375	230	280	1232	2512	2826
LKJ-801P	7.5	375	230	280	1232	2512	2826
LKJ-901P	9.1	395	260	320	868	1778	2032
LKJ-1101P	10.0	395	260	320	868	1778	2032
LKJ-1301P	10.2	395	260	320	868	1778	2032





Application

- Can be used to transfer clean water or other liquids similar to water in physical and chemical properties
- Suitable for water supply and drainage in garden irrigation, greenhouses, fish breeding and poultry raising. The pump also can be used for domestic automatic water supply places, such as lifting water from a deep well, pressure boosting of running water, etc.

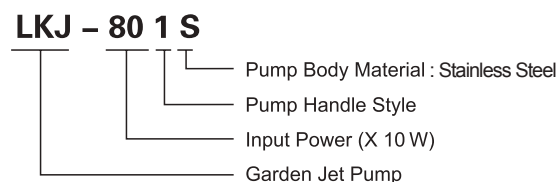
Pump

- Unique ergonomic design
- Max. fluid temperature: +35°C
- Max. suction: +8 m

Motor

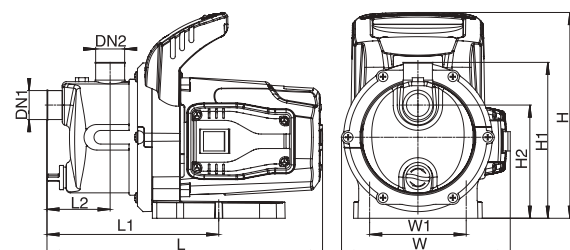
- C&U bearing
- Built-in thermal protector
- Aluminum winding
- Insulation class: F
- Protection class: IPX4
- Max. ambient temperature: +40°C

Identification Codes



Technical Data

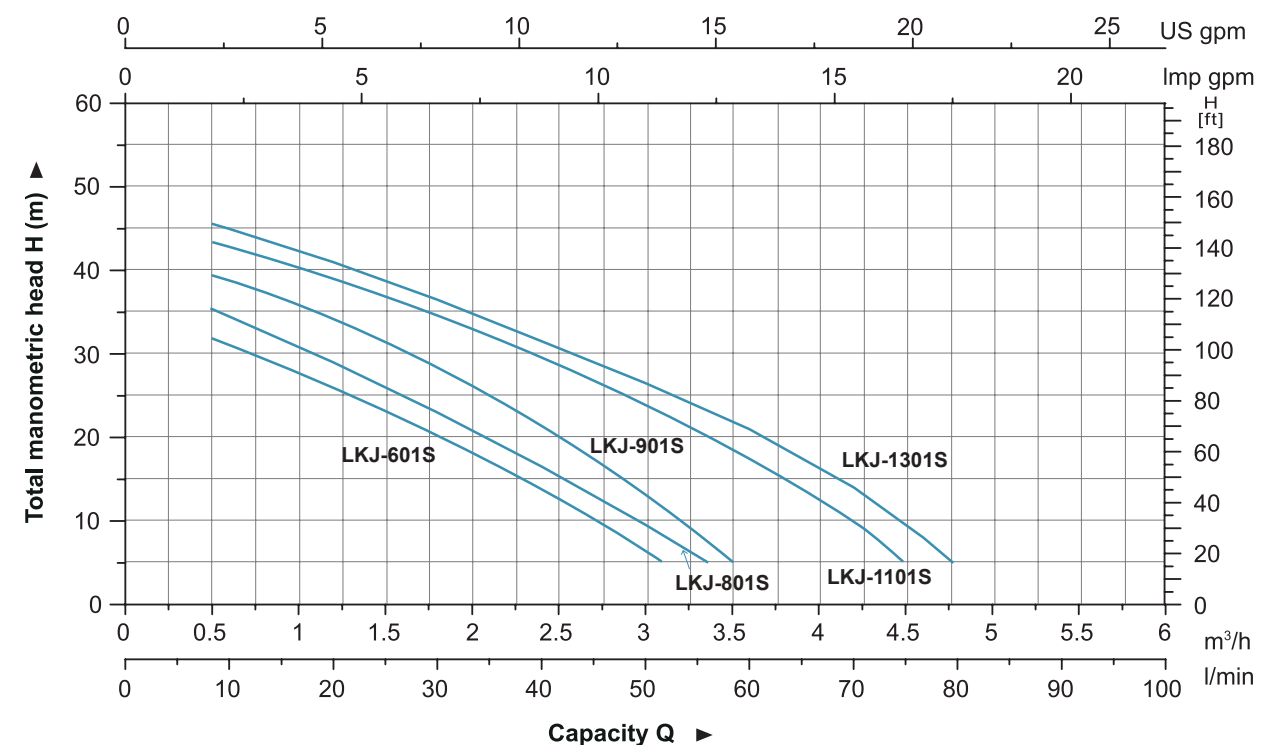
MODEL	POWER (P ₂)		Q (m ³ /h)	H (m)											
	W	HP		0	0.6	1.2	1.8	2.4	3	3.6	4.2	4.8	5.4	6	
LKJ-601S	600	0.8	0	35	31	25.5	20	14	8	-	-	-	-	-	
LKJ-801S	800	1.1	10	39	34.5	29	23	16.5	9.5	-	-	-	-	-	
LKJ-901S	900	1.2	20	43	39	34	28	21	12.5	3	-	-	-	-	
LKJ-1101S	1100	1.5	30	46	43	39	35	30	24	17	8	-	-	-	
LKJ-1301S	1300	1.75	40	48	45	41	36.5	31.5	26.5	21	14	8	-	-	



Dimension

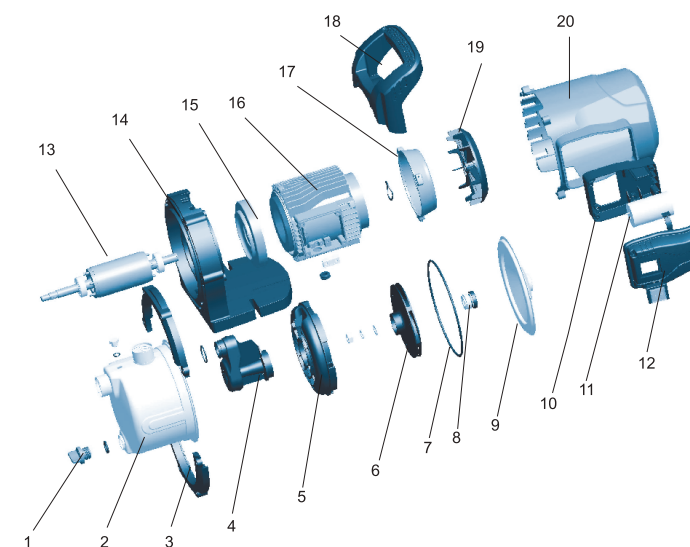
Model	DN1	DN2	L (mm)	W (mm)	H (mm)	L1 (mm)	L2 (mm)	W1 (mm)	H1 (mm)	H2 (mm)
LKJ-601S	1"	1"	342.5	210	255.5	221.5	78.5	120	193.5	140.5
LKJ-801S	1"	1"	342.5	210	255.5	221.5	78.5	120	193.5	140.5
LKJ-901S	1"	1"	369.5	243.5	284	233.5	87.5	120	215	165
LKJ-1101S	1"	1"	369.5	243.5	284	233.5	87.5	120	215	165
LKJ-1301S	1"	1"	369.5	243.5	284	233.5	87.5	120	215	165

Hydraulic Performance Curves



Materials Table

No.	Part	Material
1	Drain plug	PP
2	Pump body	AISI 304
3	Holder	PP
4	Enjector	PPD
5	Diffuser	PPD
6	Impeller	PPD
7	O-ring	NBR
8	Mechanical seal	Carbon/Ceramic
9	Bracket cover	AISI 304
10	Terminal board	ABS
11	Capacitor	
12	Switch cover	ABS
13	Rotor	
14	Motor flange	PP
15	Front plate	ZL102
16	Stator	
17	Rear cover	ZL102
18	Handle	PP
19	Fan	PP
20	Fan cover	ABS



Package Information

Model	GW (Kgs)	L (mm)	W (mm)	H (mm)	Quantity		
					20'/pcs	40'/pcs	40H'/pcs
LKJ-601S	6.9	375	230	280	1232	2512	2826
LKJ-801S	7.7	375	230	280	1232	2512	2826
LKJ-901S	9.2	395	260	320	868	1778	2032
LKJ-1101S	10.2	395	260	320	868	1778	2032
LKJ-1301S	10.6	395	260	320	868	1778	2032





LKJ-805PE-1

Features

Low-maintenance pump with integrated dry-running protection.

Convenient and secure through automatic operation-on/off function controlled by electronic pressure switch.

Motor with thermal protector.

Application

For the supply of water in domestic applications.(gardening and pressurisation)



LKJ-805P



LKJ-805PE

Model	LKJ-805P	LKJ-805PE	LKJ-805PE-1
Rated Power	800 W	800 W	800 W
Max. Head	40 m	40 m	40 m
Max. Flow	3.5 m ³ /h	3.5 m ³ /h	3.5 m ³ /h
Max. Suction Depth	7 m	7 m	7 m
Power Cable Type	H07RN-F 1.5m	H07RN-F 1.5m	H07RN-F 1.5m
Protection Class	IPX4	IPX4	IPX4
Outlet/Inlet	1"×1"	1"×1"	1"×1"
Max. Delivery Temperature	35 °C	35 °C	35 °C
Package Dimension	470×226×300 mm	470×226×300 mm	470×226×300 mm
Package Gross Weight	8.7 kg	8.7 kg	8.7 kg
Qty/20'GP	882	882	882



LKJ-X09PE

Features

Smart: runs automatically when water is needed and then turn it off.

low-maintenance with integrated dry-run protection

Compact, Light, robust and easy to use.

Motor with thermal protector.

Application

For the supply of water in domestic applications.(gardening and pressurisation)



LKJ-X09P



LKJ-X09PE-1

Model	LKJ-909P	LKJ-1109P	LKJ-909PE	LKJ-1109PE	LKJ-909PE-1	LKJ-1109PE-1
Rated Power	900 W	1100 W	900 W	1100 W	900 W	1100 W
Max. Head	43 m	46 m	43 m	46 m	43 m	46 m
Max. Flow	3.6 m ³ /h	4.6 m ³ /h	3.6 m ³ /h	4.6 m ³ /h	3.6 m ³ /h	4.6 m ³ /h
Max. Suction Depth	8 m	8 m	8 m	8 m	8 m	8 m
Power Cable Type	H07RN-F 1.5m	H07RN-F 1.5m	H07RN-F 1.5m	H07RN-F 1.5m	H07RN-F 1.5m	H07RN-F 1.5m
Protection Class	IPX4	IPX4	IPX4	IPX4	IPX4	IPX4
Outlet/Inlet	1"×1"	1"×1"	1"×1"	1"×1"	1"×1"	1"×1"
Max. Delivery Temperature	35 °C	35 °C	35 °C	35 °C	35 °C	35 °C
Package Dimension	515×256×345 mm	515×256×345 mm	515×256×345 mm	515×256×345 mm	515×256×345 mm	515×256×345 mm
Package Gross Weight	11.7 kg	11.8 kg	11.8 kg	12 kg	12.1 kg	12.1 kg
Qty/20'GP	528	528	528	528	528	528