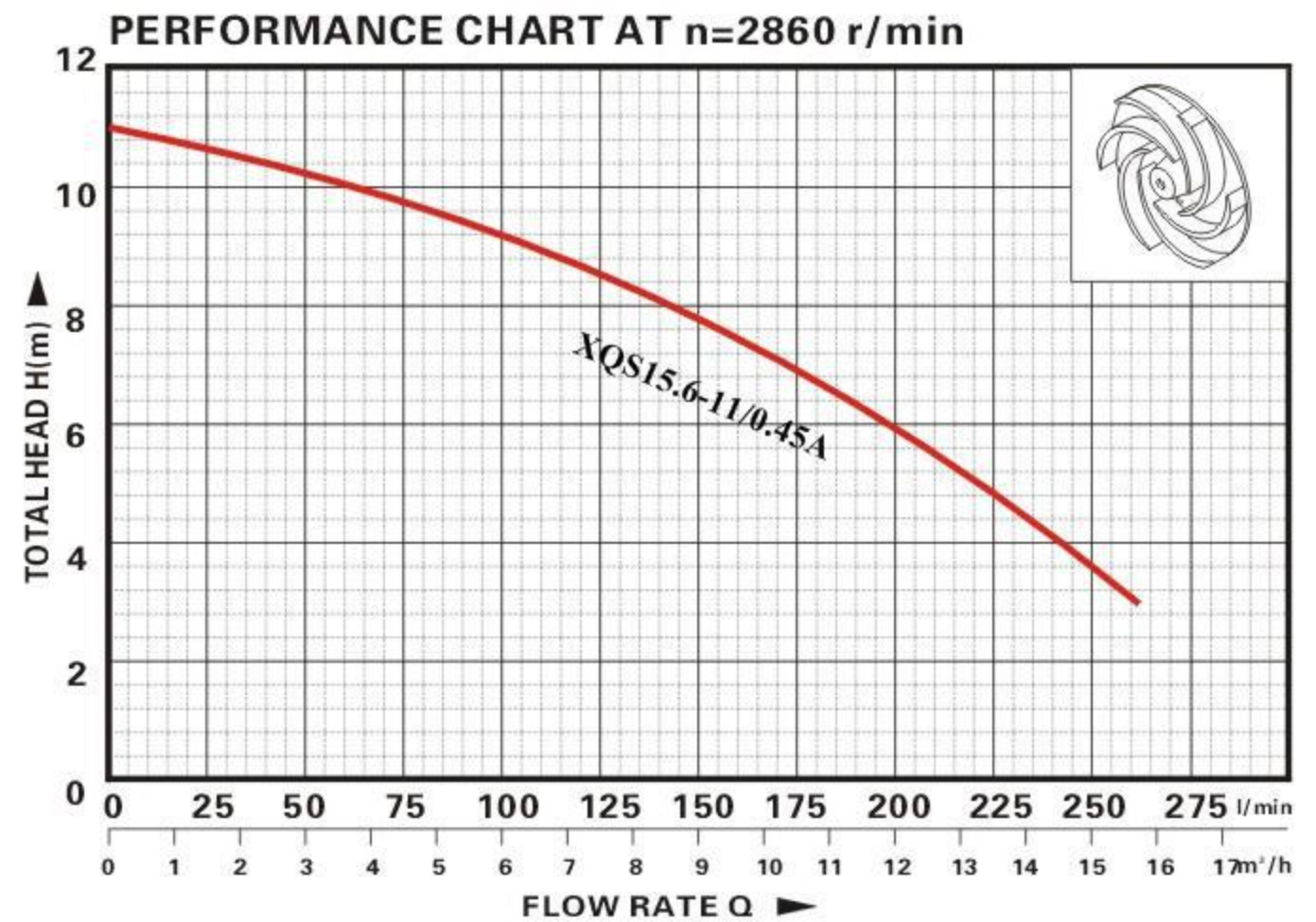


# SUBMERSIBLE PUMP



XQS15.6-11/0.45A



## TECHNICAL DATA:

Model	Power (kw)	Outlet diameter (mm)	Voltage (V/Hz)	Max.flow (l/min)	Max.head (m)	G.W. (Kg)	Dimensions (cm)
XQS15.6-11/0.45A	0.45	50	220/50	260	11	11.0	23.0 × 23.0 × 35.0

## CONDITION OF USAGE:

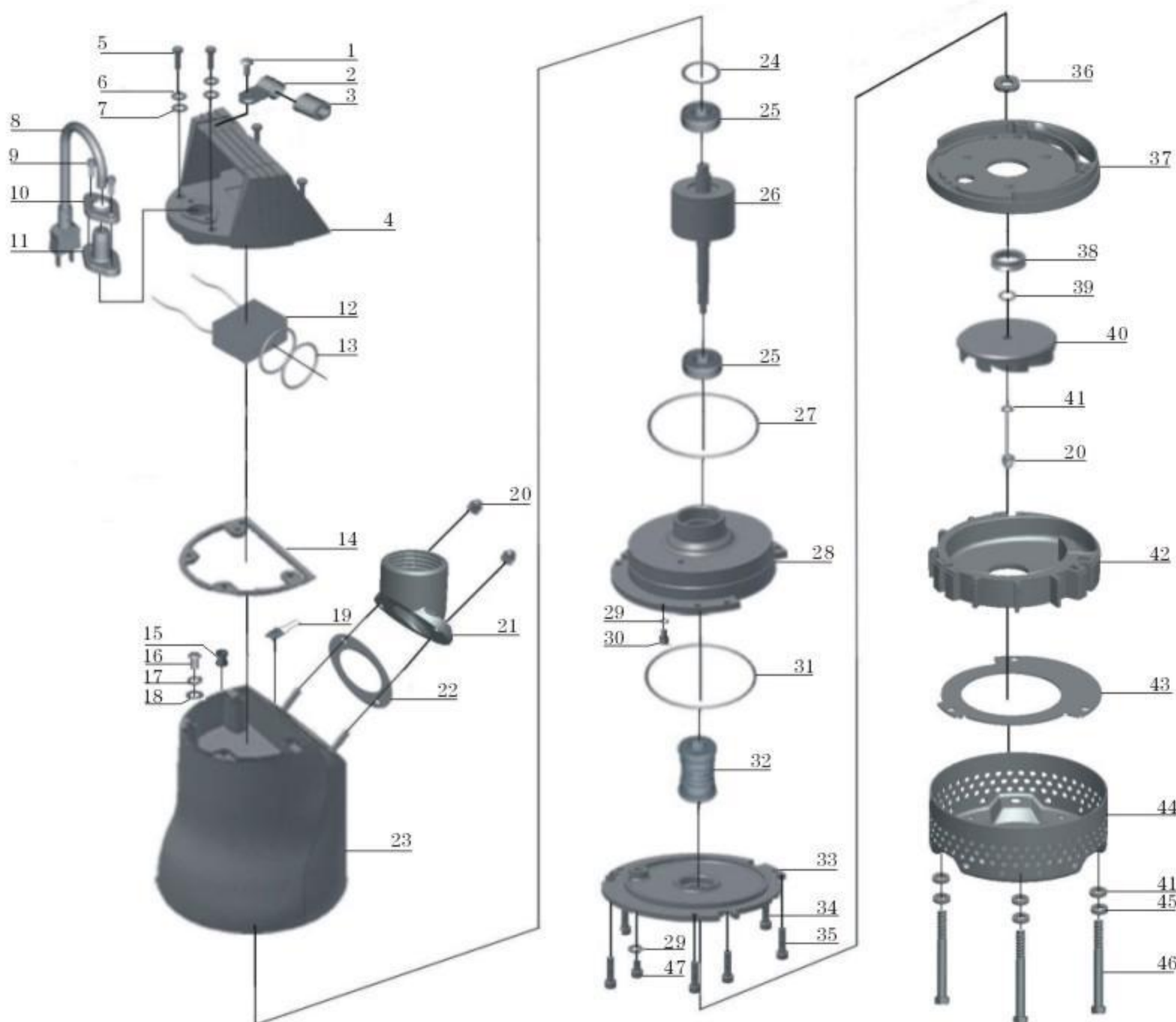
1. maximum operating depth 5 m below water level
2. maximum fluid temperature 40°C
3. PH value in water: 6.5–8.5
4. maximum passage for suspended solids  $\phi$ 0.2 mm

## FUNCTION AND FEATURE:

With features of compact size, light weight, and convenient use. This pump is widely used for house, breed aquatics, mining, and construction site. The float switch can automatically control on and off with the change of the liquor level. Protector inside the motor can automatically cut off the power when overheating or overloading, to guarantee pump's security and reliability under hard environment.

## DIAGRAM:

XQS15.6-11/0.45A



N0.	DESCRIPTION	MATERIAL	N0.	DESCRIPTION	MATERIAL
1.	Screw	0Cr18Ni9	25.	Bearing	
2.	Cable presser	0Cr18Ni9	26.	Rotor	
3.	protector	Rubber	27.	"O" ring	Rubber
4.	Handle	ZL102	28.	Oil chamber	ZL102
5.	Bolt	0Cr18Ni9	29.	"O" ring	Rubber
6.	Spring washer	0Cr18Ni9	30.	Bolt	0Cr18Ni9
7.	Washer	0Cr18Ni9	31.	Rubber washer	Rubber
8.	Cable		32.	Mechanical seal	graphite to ceramic
9.	Screw	0Cr18Ni9	33.	Oil chamber cover	ZL102
10.	Flange	0Cr18Ni9	34.	Screw	0Cr18Ni9
11.	Cable protector	Rubber	35.	Screw	0Cr18Ni9
12.	Capacitor		36.	Oil seal	
13.	"O" ring	Rubber	37.	Pump seat	Stainless steel with stainless steel insert
14.	Gasket	Rubber	38.	Lip seal	Rubber
15.	Line protector	Rubber	39.	Washer	0Cr18Ni9
16.	Screw	H62	40.	Impeller	Stainless steel with stainless steel insert
17.	Spring washer	65Mn	41.	Washer	0Cr18Ni9
18.	Washer	0Cr18Ni9	42.	Pump casing	Polyethylene
19.	Thermal protector		43.	Pump cover	1Cr17Ni7 (301)
20.	Nut	0Cr18Ni9	44.	Filter mesh	Q235A spout plastic
21.	Outlet connector	ZL102	45.	Spring washer	0Cr18Ni9
22.	Gasket	Rubber	46.	Bolt	0Cr18Ni9
23.	Stator	ZL102	47.	Bolt	0Cr18Ni9
24.	Undulated washer	65Mn			

\* Code "F" means pump assembled with float switch

\* Sic mechanical seal is available if required