



Application

- Can be used to transfer clean or slightly dirty water or other liquids similar to water in physical and chemical properties
- Suitable to be immersed in water for lifting water from the well or the pool, and draining water from the basement

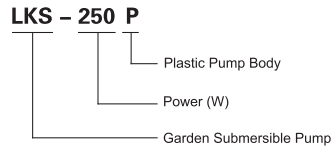
Pump

- Engineering plastic pump body
- Extensive use with two outlets
- Float switch ensures automatic cut-in and cut-out
- Max. liquid temperature: +35°C
- Max. immersion depth: 7 m
- Max. diameter of particle: 5 mm

Motor

- Motor with aluminum winding
- Built-in thermal protector
- Insulation class: F
- Protection class: IPX8

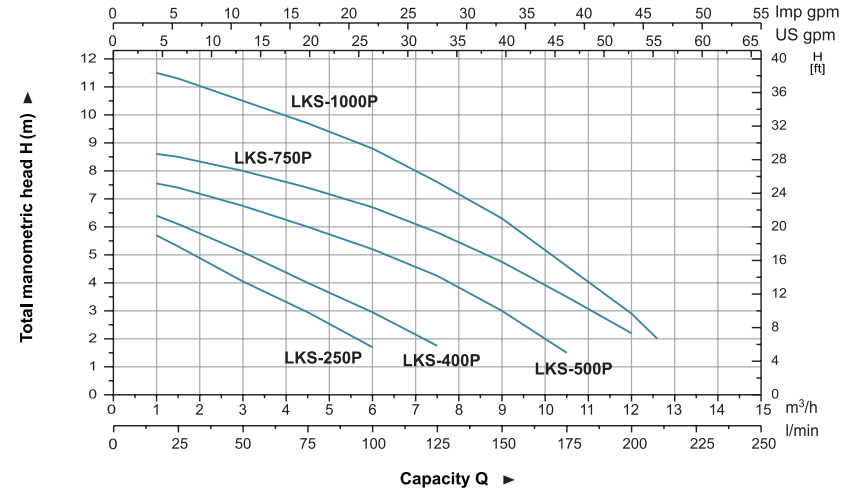
Identification Codes



Technical Data

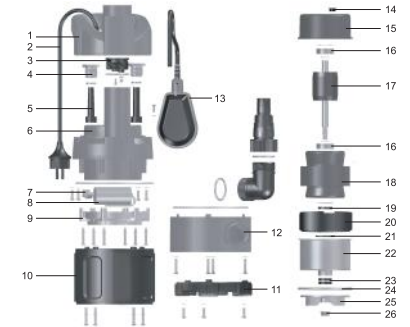
MODEL	POWER		Q (m ³ /h) Q (l/min)	0.9	1.5	3	4.5	6	7.5	9	10.5	12	12.6
	W	HP		15	25	50	75	100	125	150	175	200	210
LKS-250P	250	0.3	H (m)	5.8	5.3	4.1	3	1.7	-	-	-	-	-
LKS-400P	400	0.5		6.5	6.1	5.1	4	3	1.8	-	-	-	-
LKS-500P	500	0.7		7.6	7.4	6.8	6	5.2	4.3	3	1.5	-	-
LKS-750P	750	1		8.7	8.5	8	7.4	6.7	5.8	4.8	3.5	2.2	-
LKS-1000P	1000	1.3		11.6	11.3	10.5	9.7	8.8	7.6	6.3	4.6	2.9	2

Hydraulic Performance Curves



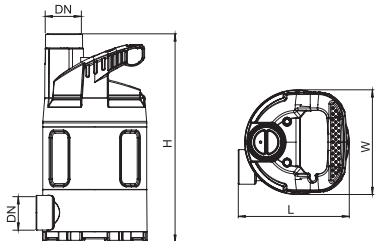
Materials Table

No.	Part	Material	No.	Part	Material
1	Handle	PP	14	Wire jacket	NBR
2	Cable	Rubber	15	Upper cover	
3	Plug	PP	16	Bearing	
4	Nut	PP	17	Rotor	
5	Cable jacket	EPDM	18	Stator	
6	Roof	PP	19	Lip seal	
7	Capacitor clip	PC/ABS	20	Bearing seat	ZL102
8	Capacitor		21	O-ring	NBR
9	Retainer ring	PP	22	Stator cover	Steel
10	Pump body	PP	23	Lip seal	
11	Base plate	PP	24	O-ring	NBR
12	Base	PP	25	Impeller	PA6
13	Float switch	PP	26	Nut	Stainless steel



Package Information

Model	GW (Kgs)	L (mm)	W (mm)	H (mm)	Quantity (PCS/20 TEU)
LKS-250P	4.4	210	160	330	2064
LKS-400P	4.6	210	160	330	2064
LKS-500P	5.2	210	160	330	2064
LKS-750P	6	210	160	330	2064
LKS-1000P	6.4	210	160	370	1720



Dimension

Model	DN	L (mm)	W (mm)	H (mm)
LKS-250P	32	157	148	295
LKS-400P		157	148	295
LKS-500P		157	148	316
LKS-750P		157	148	316
LKS-1000P		157	148	353

Application

- It can be used to transfer dirty water or other liquids similar to water in physical and chemical properties. It is suitable to be immersed in water for lifting water from the well or the pool, and draining water from the basement.

Pump

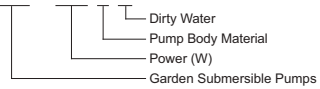
- Plastic pump body
- Extensive use with two outlets
- Max. liquid temperature: +35°C
- Float switch ensures automatic cut-in and cut-out
- Max. immersion depth: 7 m
- Max. diameter of particle: 25 mm

Motor

- Motor with aluminum winding
- Built-in thermal protector
- Insulation class: F
- Protection class: IPX8

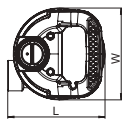
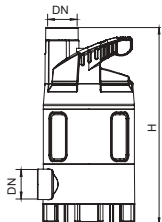
Identification Codes

LKS - 750 P W



Technical Data

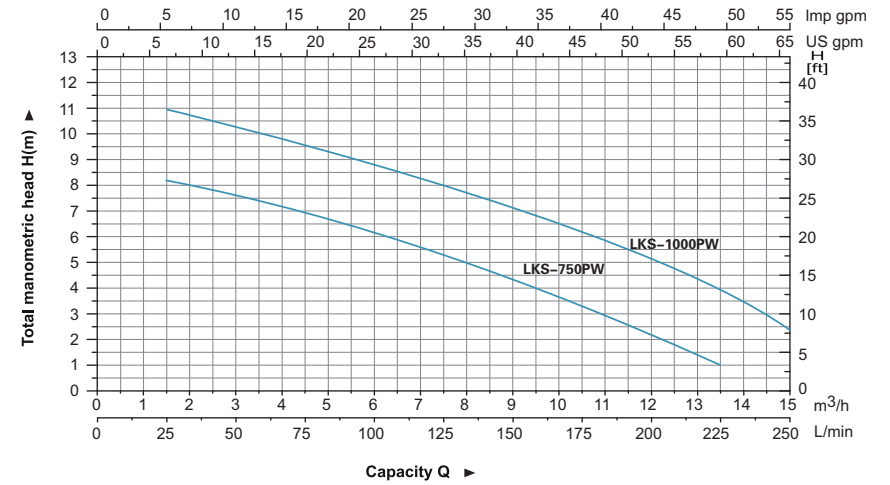
MODEL	POWER (P ₂)		Q (m ³ /h)	Q (l/min)														
	W	HP		0	1.5	3	4.5	6	7.5	9	10.5	12	13.5	15				
LKS-750PW	750	1	H (m)	8.7	8.2	7.7	7	6.2	5.5	4.4	3.3	2.2	1	-				
LKS-1000PW	1000	1.33		12	11.2	10	9.2	8.3	7.8	7	5.8	5.2	4.3	2.4				



Dimension

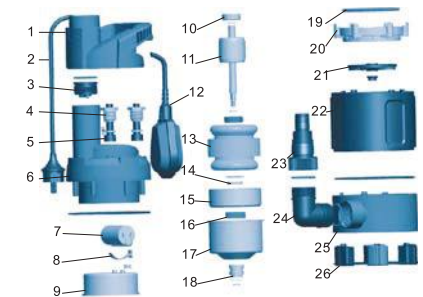
Model	DN	L (mm)	W (mm)	H (mm)
LKS-750PW	32	157	148	339
LKS-1000PW		157	148	371

Hydraulic Performance Curve



Materials Table

No.	Part	Material	No.	Part	Material
1	Handle	PP	14	Oil seal	
2	Plug cable	Rubber	15	Bearing seat	ZL102
3	Plug	PP	16	Gasket	NBR
4	Nut	PP	17	Stator shield	Steel
5	Cable jacket	EPDM	18	Mechanical seal	Carbon/ceramic
6	Roof	PP	19	O-ring	NBR
7	Capacitor		20	Retainer ring	PP
8	Capacitor clip	POM	21	Impeller	PA6
9	Upper cover	ZL102	22	Pump body	PP
10	Bearing		23	Connecting nut	PP
11	Rotor		24	Outlet adapter	PP
12	Float switch	PP	25	Base	PP
13	Stator		26	Base plate	PP



Package Information

Model	GW (Kgs)	L (mm)	W (mm)	H (mm)	Quantity (PCS/20 TEU)
LKS-750PW	6.1	210	160	350	2064
LKS-1000PW	7.7	210	160	350	1720



Features

The filter could be easily removed for cleaning and maintenance.

The switch-on and switch-off heights can be adjusted by locking the float switch on the cable holder plug.

The cable holder plug could allow freely switch between the automatic operation and manual operation.

Flat suction down to below 1mm.

Motor with thermal protector.



Model	LKS-300P
Rated Power	300 W
Max. Head	11 m
Max. Flow	2.2 m ³ /h
Max. Immersion Depth	7 m
Max. Dia. of Particle	1 mm
Outlet	3/4"
Power Cable Type	H05RN-F
Length of Power Cable	10 m
Protection Class	IPX8
Max. liquid Temperature	35 °C
Qty in carton box	4 pcs
Package Dimension	390×390×450 mm
Package Gross Weight	20.9 kg
Qty/20'GP	1680
Automatic function	Float Switch



Features

Unique ergonomic handle design.

Reliable sealing construction guarantee long service life.

Plastic pump housing.

Can stay permanently submerged in water.

Can be used for transfer clean water.

Motor with thermal protector.

Model	XKS-900S	XKS-1100S
Rated Power	900 W	1100 W
Max. Head	34 m	45 m
Max. Flow	6.5 m ³ /h	6.5 m ³ /h
Max. Immersion Depth	7 m	7 m
Max. Dia. of Particle	1 mm	1 mm
Outlet	1"	1"
Power Cable Type	H07RN-F	H07RN-F
Length of Power Cable	10 m	10 m
Protection Class	IPX8	IPX8
Max. liquid Temperature	35 °C	35 °C
Qty in carton box	1 pcs	1 pcs
Package Dimension	245x190x455 mm	245x190x480 mm
Package Gross Weight	9.9 kg	11.4 kg
Qty/20'GP	1380	1104
Automatic function	Float Switch	Float Switch



Application

- Can be used to transfer dirty water or other liquids similar to water in physical and chemical properties
- Suitable to be immersed in water for lifting water from the well or the pool, and draining water from the basement.
- Specially applicable for small space where water needs to be pumped.

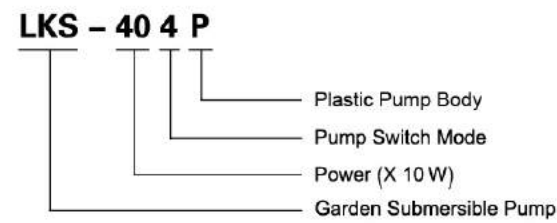
Pump

- Engineering plastic pump body
- Extensive use with two outlets
- Max. liquid temperature: +35°C
- Innovative electronic water sensor switch ensures automatic cut-in and cut-out
- Max. immersion depth: 7 m
- Max. diameter of particle: 5 mm

Motor

- Motor with aluminum winding
- Built-in thermal protector
- Insulation class: F
- Protection class: IPX8

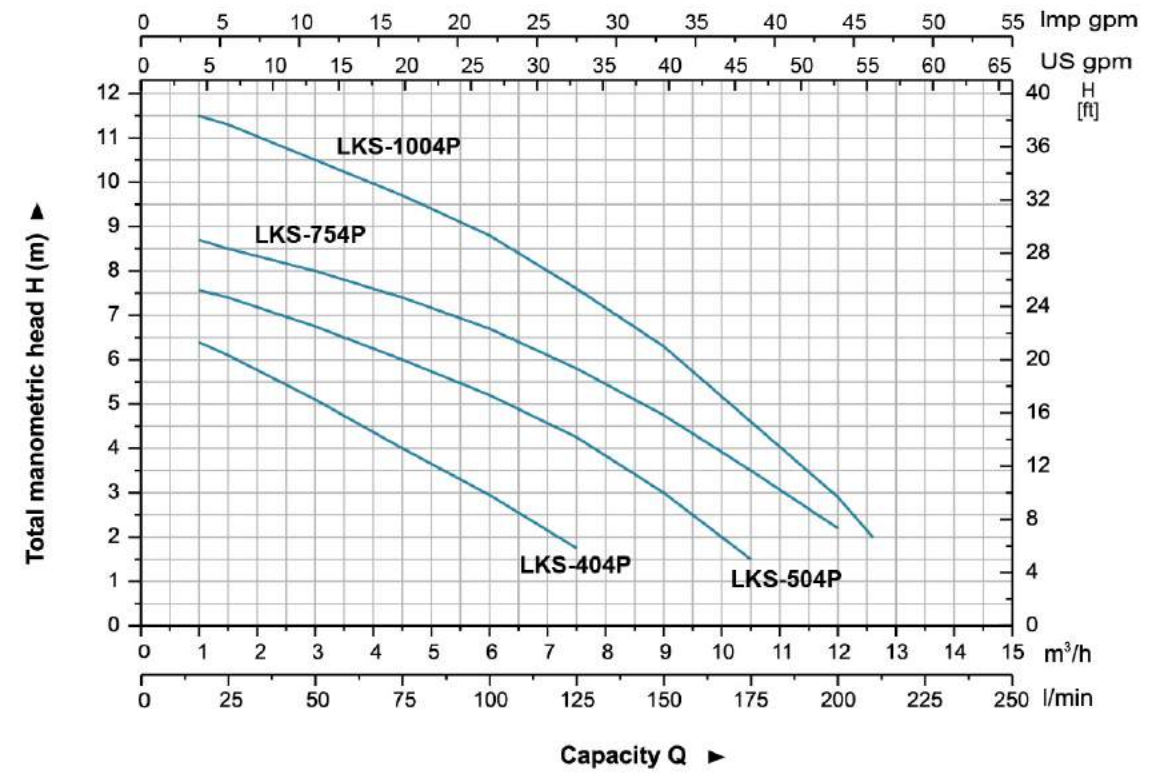
Identification Codes



Technical Data

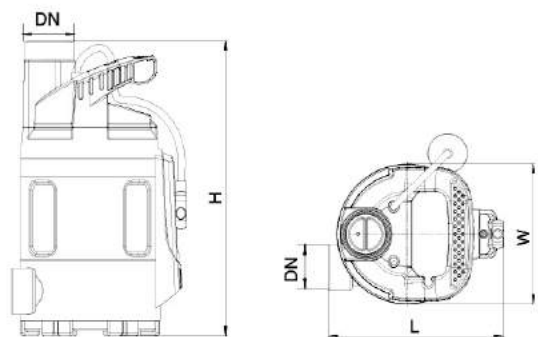
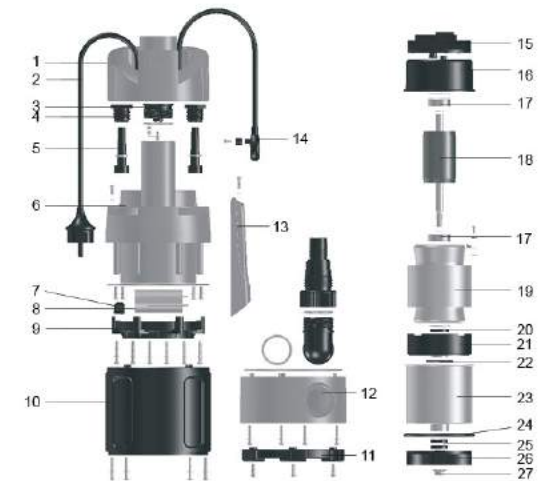
MODEL	POWER		Q (m³/h)	0.9	1.5	3	4.5	6	7.5	9	10.5	12	12.6
	W	HP		Q (l/min)	15	25	50	75	100	125	150	175	200
LKS-404P	400	0.5	H (m)	6.5	6.1	5.1	4	3	1.8	-	-	-	-
LKS-504P	500	0.7		7.6	7.4	6.8	6	5.2	4.3	3	1.5	-	-
LKS-754P	750	1		8.7	8.5	8	7.4	6.7	5.8	4.8	3.5	2.2	-
LKS-1004P	1000	1.3		11.6	11.3	10.5	9.7	8.8	7.6	6.3	4.6	2.9	2

Hydraulic Performance Curves



Materials Table

No.	Part	Material	No.	Part	Material
1	Handle	PP	14	Inductor	
2	Cable	Rubber	15	Controller	
3	Plug	PP	16	Upper cover	
4	Nut	PP	17	Bearing	
5	Cable jacket	EPDM	18	Rotor	
6	Roof	PP	19	Stator	
7	Capacitor clip	PC/ABS	20	Lip seal	
8	Capacitor		21	Bearing seat	ZL102
9	Retainer ring	PP	22	O-ring	NBR
10	Pump body	PP	23	Stator cover	Steel
11	Base plate	PP	24	Lip seal	
12	Base	PP	25	O-ring	NBR
13	Inductor cover	PP	26	Impeller	PA6
			27	Nut	Stainless steel



Dimension

Model	DN	L (mm)	W (mm)	H (mm)
LKS-404P	32	157	148	311
LKS-504P		157	148	332
LKS-754P		157	148	332
LKS-1004P		187	148	364

Package Information

Model	GW (Kgs)	L (mm)	W (mm)	H (mm)	Quantity (PCS/20 TEU)
LKS-404P	4.8	210	160	340	2064
LKS-504P	5.4	210	160	340	2064
LKS-754P	6.2	210	160	340	2064
LKS-1004P	7	210	160	370	1720

